



ILLINOIS
SHAKESPEARE
FESTIVAL

The Professional Theatre at Illinois State University

2026 Season

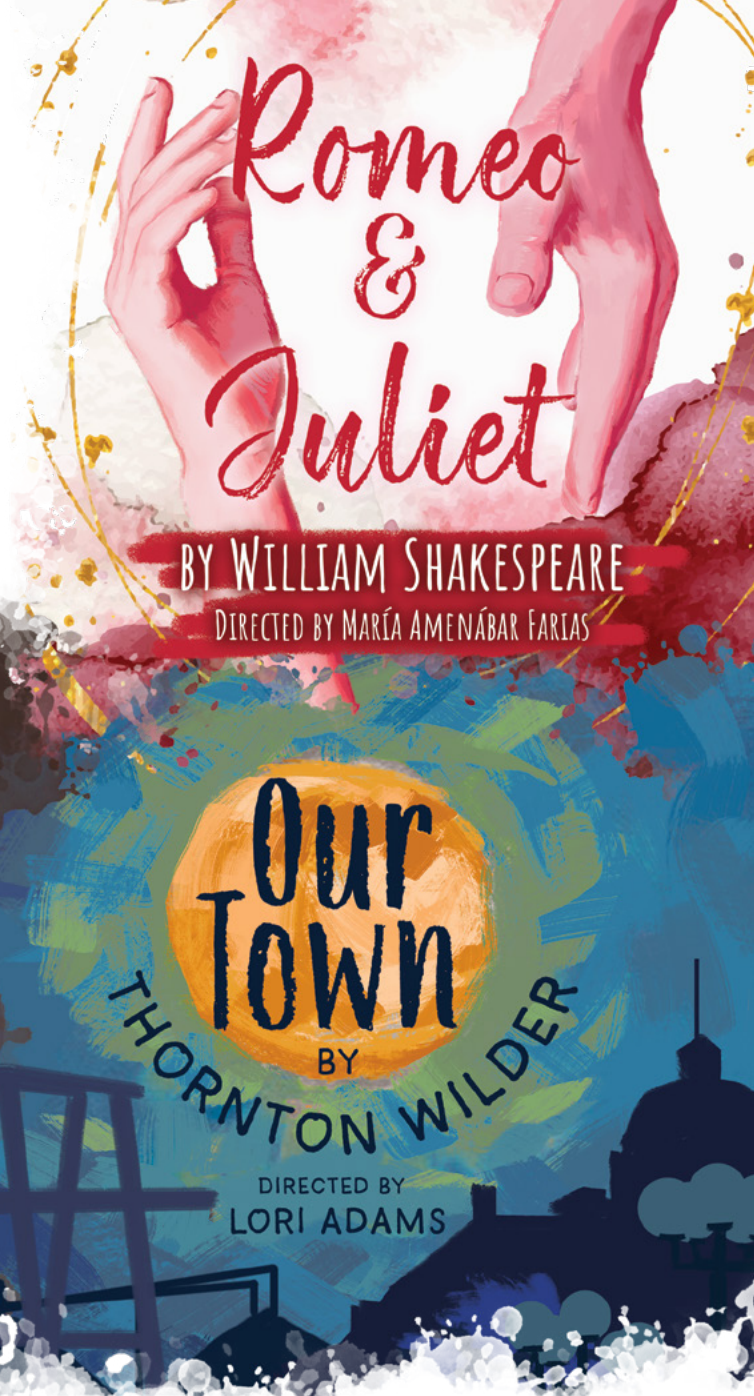
Artistic Director **Robert Quinlan**

THE TWO GENTLEMEN OF VERONA



BY
WILLIAM SHAKESPEARE

DIRECTED BY DANIELLE ROOS



Romeo & Juliet

BY WILLIAM SHAKESPEARE

DIRECTED BY MARÍA AMENÁBAR FARIAS

Our TOWN

BY
THORNTON WILDER

DIRECTED BY
LORI ADAMS



WONSOOK KIM
COLLEGE OF FINE ARTS
Illinois State University



This program is
partially sponsored
by a grant from the
Illinois Arts Council



BARD BASH & CABARET

"There's something way down deep that's eternal about every human being."

-- *Our Town* by Thornton Wilder

Sunday August, 2, 2026

Dinner, Drink, and Social 6 p.m.

Cabaret Performance 7:30 p.m.



Bard Bash Dinner and Cabaret \$125
Cabaret only \$25

Learn more and purchase tickets:
IllinoisShakes.com/Giving/Bard-bash-cabaret



NORMAL PUBLIC LIBRARY



FIND YOUR "SPOT"

There is a variety of seating and workspaces available throughout the library, perfect for studying, reading, and collaboration.



MARK YOUR CALENDAR

NPL has lots of fun and free events for all ages throughout the year!

- Book clubs
- Crafting events
- Live music & performances
- Yoga & meditation
- Reading Challenges



MORE THAN BOOKS

Your library card grants you access to digital materials, such as audiobooks, ebooks, and streaming content! You can also check out board games, video games, DVDs, and so much more!



GET CREATIVE

Check out our new Tinker Studio—a do-it-yourself space full of equipment perfect for exploring your creativity. Visit normalpl.org/tinker-studio for more information and a full list of the available equipment.



**NORMAL
PUBLIC LIBRARY**

206 W. College Ave.
normalpl.org • 309.452.1757



Illinois Shakespeare Festival 2026 Season

Robert Quinlan, Artistic Director

All performances begin at 7:30 p.m. at Ewing Theatre

The Two Gentlemen of Verona

by William Shakespeare
Directed by
Danielle Roos

Dates

Wednesday, June 24 (Preview)
Saturday, June 27
Sunday, June 28
Saturday, July 11
Thursday, July 16
Sunday, July 19
Tuesday, July 21
Friday, July 24
Wednesday, July 29
Saturday, August 1

Romeo and Juliet

by William Shakespeare
Directed by
María Amenábar Farias

Dates

Thursday, June 25 (Preview)
Friday, June 26
Sunday, July 12
Tuesday, July 14
Friday, July 17
Thursday, July 23
Sunday, July 26
Tuesday, July 28
Friday, July 31

Our Town

by Thornton Wilder
Directed by
Lori Adams

Dates

Thursday, July 9 (Preview)
Friday, July 10
Wednesday, July 15
Saturday, July 18
Wednesday, July 22
Saturday, July 25
Thursday, July 30

The Illinois Shakespeare Festival is a proud member of Illinois State University, Wonsook Kim College of Fine Arts, and School of Theatre, Dance, and Film.



The Director is a member of the
**STAGE DIRECTORS AND CHOREOGRAPHERS
SOCIETY**, a national theatrical labor union.



**UNITED
SCENIC
ARTISTS**



Actors' Equity Association (AEA), founded in 1913, is the U.S. labor union that represents more than 50,000 actors and stage managers. Equity seeks to foster the art of live theatre as an essential component of society and advances the careers of its members by negotiating wages, working conditions and providing a wide range of benefits, including health and pension plans. Actors' Equity is a member of the AFL-CIO and is affiliated with FIA, an international organization of performing arts unions. www.actorsequity.org

United Scenic Artists, Local USA 829 of the IATSE is the union representing Scenic, Costume, Lighting, Sound and Projection Designers In Live Performance.

Illinois Shakespeare Festival

Campus Box 5700

Normal, IL 61760-5700

Box Office: (309) 438-2535

Management Office: (309) 438-8785

Costume Donations: (309) 438-5150

Festival Email: Shake@IllinoisState.edu

Box Office Email: FineArtsTickets@IllinoisState.edu

Website: IllinoisShakes.com

Facebook: Facebook.com/IllinoisShakes

Instagram: @IllinoisShakes

Center for the Performing Arts— Illinois State University campus

(Corner of School and Beaufort streets in Normal)

Tuesday-Friday, noon-4 p.m.

Ewing Cultural Center

Box Office opens at 6:30 p.m.

Do you want a deeper look behind the curtain?



Read behind the scenes dramaturgy and sign up for the ISF Friends Newsletter by scanning the QR code or visiting IllinoisShakes.com/Education/Dramaturgy



SCHOOL OF
**THEATRE, DANCE,
AND FILM**
Illinois State University

Important Information

The taking of pictures or making recordings of any kind is not allowed in the theatre.

Glass bottles, open containers, coolers, strollers, and picnic baskets are not allowed in the theatre.

Patrons must refrain from walking on the stage.

Latecomers will be seated at a suitable break in the play's action, at the discretion of the house manager, and only in seats chosen by the house manager.

Please silence cell phones and other electronic devices. If you need to be reached for an emergency, the house manager will assist you.

Smoking is not allowed anywhere on the grounds.

For your own safety, when at Ewing, be sure to cross the street only at the corner crosswalk at the light. Please do not walk over to Sunset Road to cross after the performance.

Weather Cancellations

Part of the Illinois Shakespeare Festival experience is the beauty of our outdoor Ewing Theatre. In the event of inclement weather, we stand by the following policies: Due to the unpredictability of Central Illinois weather, ISF will not make an early cancellation decision prior to 5 p.m. on the day of a performance. The decision to cancel or move forward with a production will be posted to the Illinois Shakespeare Festival social media and the front page of our website.

In the case of rain during the performance, every effort will be made to complete the show, even playing through light showers. Should any performance be rained out before the first intermission, patrons have 2 business days to exchange their ticket(s) for another performance through the ISF Box Office at (309) 438-2535. If a performance is stopped due to weather after the first intermission, the evening will be considered complete, and NO ticket exchanges will be made.



Further details on the policy can be found at: IllinoisShakes.com/tickets

A Letter from the Artistic Director

Robert Quinlan

Ciao and Welcome to the Illinois Shakespeare Festival 2026 Season!

It is a pleasure to welcome you to the Illinois Shakespeare Festival for our 2026 season—a journey to Italy and back to America. As the grandson of Italian immigrants (Mafalda and Vittorio), I grew up hearing stories about “the old country” that would fire up my imagination. Shakespeare likely never visited Italy, yet he imagined a world there in which he set some of his most famous plays.

This year, for our 49th Festival, we will produce two of these, *Romeo and Juliet* and *The Two Gentlemen of Verona*. In these plays, Shakespeare envisions a Verona in which young people fall in love, take risks, and negotiate through revenge and forgiveness. Our third play will bring us back to the United States for Thornton Wilder’s brilliant reflection on small town life, *Our Town*.

Romeo and Juliet conjures two star-crossed lovers from feuding families as they fall in love, rebel against authority, and seek to find their own path in a divided world. Featuring some of Shakespeare’s most beautiful language, this production is directed by María Amenábar Farias, associate producer at the Milwaukee Repertory Theater and an alum of the MFA in directing program at Illinois State University.

Exploring similar themes through a comedic lens, *The Two Gentlemen of Verona* tests the bounds of friendship and forgiveness. Notably, this play also features Shakespeare’s most famous canine character—Crab the Dog—a loveable but ill-mannered pooch. We are thrilled to have director Danielle Roos, assistant professor of directing at Texas State University, join us for the first time to helm this hilarious production.

For the first time in Illinois Shakespeare Festival history, we will produce a beloved American classic, *Our Town* by Thornton Wilder. Written in 1938, this play still feels like a fresh look at

small town life and what it means to be part of a community. We are thrilled to welcome back Lori Adams, who most recently directed *The Book of Will* on the Ewing stage, to lead this production.

One of my favorite events each summer is attending Nancy Steele Brokaw’s original Theatre for Young Audiences play for the young and young at heart. This year’s offering *Get, Set, Romeo and Juliet!* is a 40-minute romp through *Romeo and Juliet*, one of Shakespeare’s most beloved plays.

Other events to look forward to:

Courtyard Music Series featuring pre-show entertainment provided by local musicians.

Falstaff’s Courtyard Pub open after weekend performances for conversation and refreshment.

Food Trucks on select nights with delicious dining options.

Picnics on the lawn—before the show—bring your own feast and enjoy the beautiful scenery of the Ewing Cultural Center.

Bard Basics to learn more about the evening’s show, hosted by a Festival scholar.

Talk-backs with the cast on select nights.

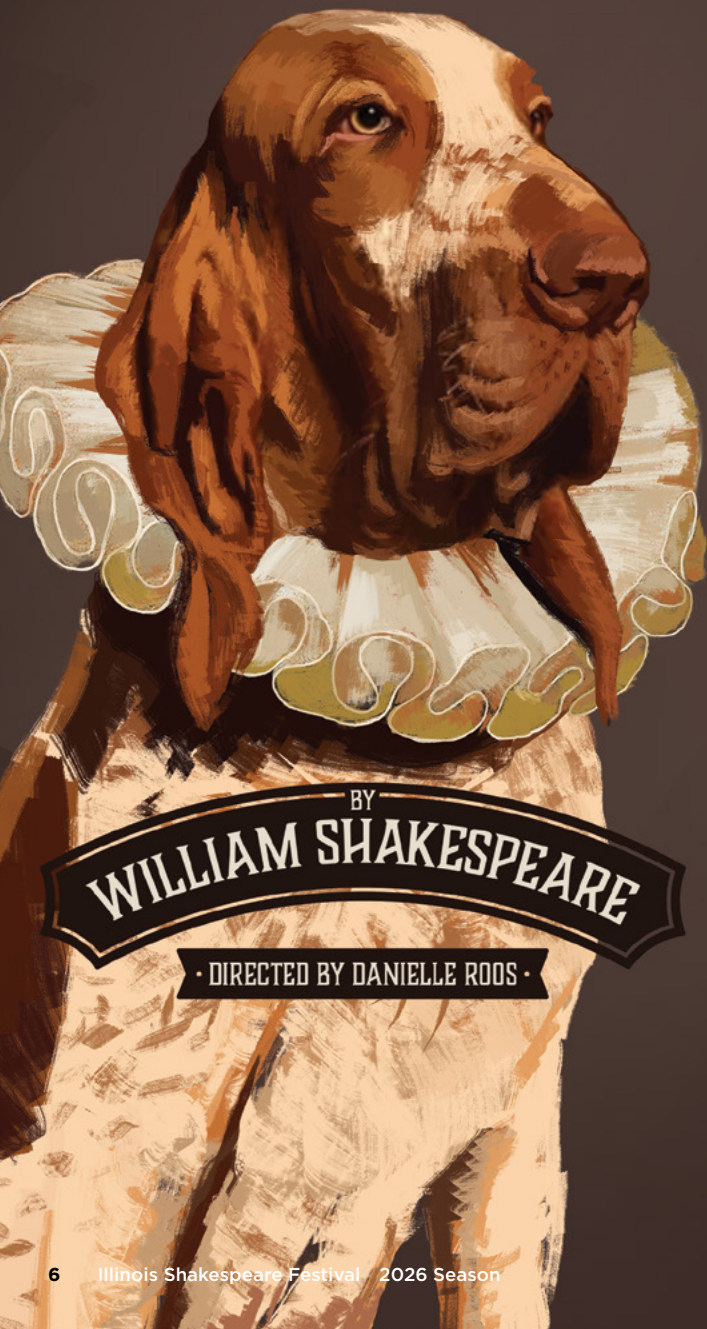


I hope you enjoy this Italian-American season. Thank you for attending and supporting professional theatre under the stars!

Sinceramente,

Robert Quinlan

THE TWO GENTLEMEN OF VERONA



BY
WILLIAM SHAKESPEARE

· DIRECTED BY DANIELLE ROOS ·

The Two Gentlemen of Verona

Synopsis by Kee-Yoon Nahm

Valentine bids goodbye to his friend **Proteus** as he prepares to leave Verona for Milan. Despite Valentine's encouragement, Proteus is not interested in seeing the wider world because he is in love with **Julia**. But then, Proteus' father **Antonio** decides to send his son to Milan to seek his fortune. Unable to defy his father, Proteus must leave Julia with a heavy heart. They exchange rings as keepsakes, vowing to stay faithful to each other. Proteus' servant **Lance** is also sad to leave his family, but at least his dog **Crab** will accompany him.

Meanwhile, in the great city of Milan, Valentine is lovestruck by **Silvia**, the daughter of the ruling **Duchess**. Valentine bids his servant **Speed** to deliver his love letters to Silvia. But Valentine has a rival: **Sir Thurio**, who is a lousy suitor but seems to have the Duchess' favor. Valentine sees no hope of winning the Duchess' approval, and so he plans to elope with Silvia.

Proteus arrives in Milan with his uncle **Sir Eglantine**. The two young gentlemen reunite, and Valentine tells Proteus about his love for Silvia. Proteus is stunned by his friend's transformation: Valentine, who had previously teased Proteus for being in love, now heaps the highest praises on Silvia. Proteus becomes intrigued by this woman who has stolen Valentine's heart.

Back in Verona, Julia can't stand being away from Proteus. Aided by her servant **Lucetta**, Julia disguises herself as a young man as she heads to Milan after her lover...

The Two Gentleman of Verona is made possible, in part, through generous underwriting support from Ann Durand and Sue Silvey.

Production

Director Danielle Roos
 Scenic Design..... John C. Stark**±
 Costume Design Zandra Siple
 Lighting Design Heather Reynolds±
 Sound Designer Angela Joy Baldasare
 Stage Manager..... Lucy Yahr*±
 Fight Choreographer..... Zev Steinrock
 Assistant Fight Choreographer..... Brandon Ndagijimana ±
 Intimacy Director Zev Steinrock
 Voice and Text Coach..... Natalie Blackman±
 Dramaturgy Kee-Yoon Nahm
 Assistant Director/Choreographer..... Cristen Monson±
 Assistant Dramaturg Charlie Froy±

Cast

Sir Eglamour Steve Cardamone*
 The Duchess Rayme Cornell*
 Lucetta Anne Marie Damman*
 Valentine Isaac Daniel
 Outlaw 3..... Rosemarie Erban±
 Outlaw 5..... Andrew Faber±
 Proteus Dominic Gross
 Launce Jermaine Jenkins
 Hostess Sophia Joyce±
 Panthino/Outlaw 2 Jeremiah King
 Antonio/Thurio Dan Matisa*
 Silvia Jady Mc Coy
 Julia Grace Mori
 Mercatio/Outlaw 1..... Everett 'Eazy' Pervall
 Outlaw 4 Chris Ramshaw
 Speed Wade Schacht
 Crab Scout (Handler: Ruth Getchius)

Understudies

Julia- Rosemarie Erban±, Sir Eglamour/Speed- Andrew Faber±, Silvia/Lucetta- Sophia Joyce±, Proteus- Jeremiah King, Duke/Antonio/Thurio- Everett 'Eazy' Pervall, Valentine / Launce- Chris Ramshaw

*Denotes membership in Actor's Equity Association

** Denotes Membership in United Scenic Artists

± Denotes Faculty, Staff, Student, or Alumni of Illinois State University



FUSION BREW
 A BUBBLE TEA & ESPRESSO CAFE

503 S MAIN ST,
 NORMAL

WWW.FUSIONBREW.COM
 (309) 454-9300

MONDAY - SATURDAY 7AM TO 7PM | SUNDAY 9AM TO 6PM

MAJESTIC

INTERIOR DESIGN



Romeo & Juliet

BY WILLIAM SHAKESPEARE

DIRECTED BY MARÍA AMENÁBAR FARIAS

Romeo and Juliet

Synopsis by Kee-Yoon Nahm

Two families, headed respectively by **Lord Montague** and **Lord Capulet**, are engaged in a longstanding feud that embroils the entire city of Verona. **Prince Escalus**, the ruler, delivers an ultimatum: any new fighting will be severely punished. Lord Montague's son **Romeo** has been spending a lot of time alone lately, allowing him to avoid the recent brawl. His cousin **Benvolio** learns that it is because Romeo is pining over a woman named Rosaline.

The Capulet manor is busy preparing for a grand feast. A gentleman named **Paris** makes a marriage proposition to Lord Capulet for his young daughter **Juliet**, but Lord Capulet is reluctant to wed their only child so soon. **Lady Capulet** instructs Juliet to start thinking of marriage—first by meeting Paris at the party. Juliet's **Nurse** is eager to see the young girl happily married.

Mercutio (who is neither a Montague nor a Capulet) finds out about the feast and decides to crash it with Benvolio and Romeo. Romeo isn't in the mood to enjoy the festivities at first, but then he sees Juliet and instantly falls in love with her. At the same time, Juliet's cousin **Tybalt** notices Romeo and vows to make him pay for his intrusion into Capulet territory.

Rather than go home, Romeo lingers in the Capulet estate garden at night, where he chances upon Juliet standing at a high balcony. Romeo and Juliet confirm their love for each other under the moonlight and decide to get married. Romeo seeks the advice of **Friar Lawrence**, who agrees to help. Friar Lawrence believes that Romeo and Juliet's union could mend the rift between the two warring families...

Romeo and Juliet is made possible, in part, through generous underwriting support from Joan and Charles Vanden Eynden.

Production

Director María Amenábar Farias±
 Scenic Design..... John C. Stark**±
 Costume Design Renee Garcia**
 Lighting Design Heather Reynolds±
 Sound Designer/Composer Angela Joy Baldasare
 Stage Manager Rose Geovanest±
 Fight Choreographer Zev Steinrock
 Assistant Fight Choreographer..... Brandon Ndagijimana ±
 Intimacy Director Zev Steinrock
 Voice and Text Coach..... Natalie Blackman±
 Choreographer..... Laina Reese±
 Dramaturgy Kee-Yoon Nahm
 Assistant Dramaturg Charlie Froy±

Cast

Lord Capulet..... Steve Cardamone*
 Lady Capulet Rayme Cornell*
 Nurse Anne Marie Damman*
 Romeo Isaac Daniel
 Sampson/Petruchio/Second Rosemarie Erban±
 Paris Andrew Faber±
 Benvolio Dominic Gross
 Mercutio Jermaine Jenkins
 Balthazar..... Sophia Joyce±
 Gregory/Paris' Page..... Jeremiah King
 Friar Dan Matisa*
 Abram/First Watch Jadyn McCoy
 Juliet..... Grace Mori
 Prince/Friar John..... Everett 'Eazy' Pervall
 Peter/Third Watch Chris Ramshaw
 Tybalt Wade Schacht
 Lord Montague/Apothecary Robert Quinlan±

Understudies

Lady Capulet/Nurse-Rosemarie Erban±, Benvolio/Lord Capulet-Andrew Faber±, Juliet/Tybalt-Sophia Joyce±, Romeo/Lord Montague-Jeremiah King, Friar Lawrence-Everett 'Eazy' Pervall, Mercutio, The Prince- Chris Ramshaw

*Denotes membership in Actor's Equity Association

** Denotes Membership in United Scenic Artists

± Denotes Faculty, Staff, Student, or Alumni of Illinois State University

NOMAD
THEATRE THAT MOVES →

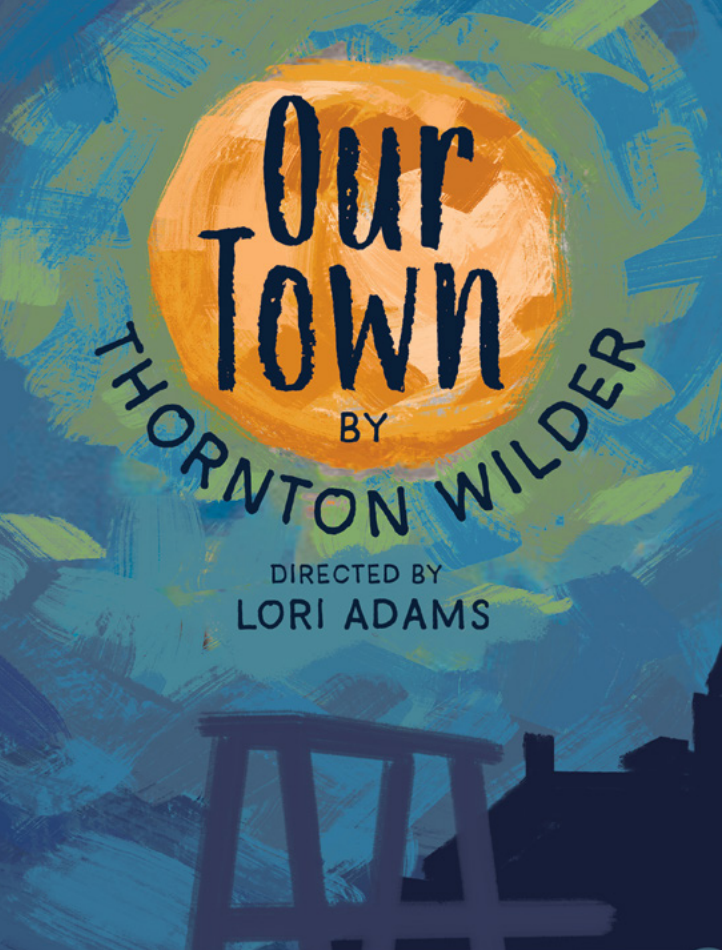
Come be a part of Theatre the Moves!
Explore more at www.nomadtheatre.org

SEE
THE DIFFERENCE

Your *Trusted* Vision Provider

Gailey
Eye Clinic

Find Your Location at
GaileyEyeClinic.com



Thornton Niven Wilder Chronology

- 1897 Born in Madison, Wisconsin (April 17)
- 1906 Moves to Hong Kong in May and to Berkeley, California in October
- 1906-10 Emerson Public School in Berkeley
- 1910-11 China Inland Mission School, Chefoo, China (one year)
- 1912-13 Thacher School, Ojai, CA (one year). First play known to be produced: *The Russian Princess*
- 1915 Graduates from Berkeley High School; active in school dramatics
- 1915-17 Oberlin College; published regularly
- 1920 B.A. Yale College (3-month service in 1918 with U.S. Army in 1918); many publications
- 1920-21 American Academy in Rome (8-month residency)
- 1920s French teacher at Lawrenceville School, Lawrenceville, New Jersey ('21-'25 & '27-'28)
- 1924 First visit to the MacDowell Colony, Peterborough, New Hampshire
- 1926 M.A. in French literature, Princeton University
The Trumpet Shall Sound produced off-Broadway (American Laboratory Theatre)
The Cabala (first novel)
- 1927 *The Bridge of San Luis Rey* (novel - Pulitzer Prize)
- 1928 *The Angel That Troubled The Waters* (first published collection of drama-playlets)
- 1930s Part-time faculty, University of Chicago (comparative literature and composition); lectures across the country; first Hollywood screen-writing assignment (1934); extensive foreign travel
- 1930 *The Woman of Andros* (novel)
Completion of home for his family and himself in Hamden, Connecticut
- 1931 *The Long Christmas Dinner and Other Plays* (six one-act plays)
- 1932 *Lucrece* opens on Broadway starring Katharine Cornell (translation of André Obey's *Le Viol de Lucrece*)
- 1935 *Heaven's My Destination* (novel)
- 1937 *A Doll's House* (adaptation/trans.) opens on Broadway starring Ruth Gordon
- 1938 *Our Town* (Pulitzer Prize) and *The Merchant of Yonkers* open on Broadway
- 1942 *The Skin of Our Teeth* (Pulitzer Prize) opens on Broadway
Screenplay for Alfred Hitchcock's *The Shadow of a Doubt*
- 1942-45 Service with Army Air Force in North Africa and Italy (Lieut. Col. at discharge - Bronze Star and O.B.E.)
- 1948 *The Ides of March* (novel); performing in his plays in summer stock in this period
The Victors opens off-Broadway (translation of Sartre's *Morts sans sépulture*)
- 1949 Major role in Goethe Convocation in Aspen; lectures widely.
- 1951-52 Charles Eliot Norton Professor of Poetry at Harvard

Our Town

By Thornton Wilder

Thornton Wilder (1897-1975) is the only writer to win Pulitzer Prizes for both drama (*Our Town* and *The Skin of Our Teeth*) and fiction (*The Bridge of San Luis Rey*). He collaborated with Alfred Hitchcock on *Shadow of a Doubt*, hiked the Alps with the heavyweight boxing champion Gene Tunney, received a bronze star for his service in World War II, and was credited with discovering Orson Welles. He was also a much-loved teacher, letter-writer (especially with Gertrude Stein), and public speaker—in four languages. *Hello, Dolly!* is based on his play *The Matchmaker*. Read more about his exciting life by scanning the QR code or visiting thorntonwilder.com/biography.



- 1952 Gold Medal for Fiction, American Academy of Arts and Letters
- 1953 Cover of *Time Magazine* (January 12)
- 1955 *The Matchmaker* opens on Broadway starring Ruth Gordon
The Alcestiad produced at Edinburgh Festival with Irene Worth (as *A Life in the Sun*)
- 1957 German Peace Prize
- 1961 Libretto for *The Long Christmas Dinner* (music by Paul Hindemith—premieres in Mannheim, West Germany)
- 1962 “Plays for Bleecker Street” (*Someone from Assisi, Infancy, and Childhood*) premiere at NYC’s Circle in the Square
 Libretto for *The Alcestiad* (music by Louise Talma—premieres in Frankfurt, West Germany)
- 1963 Presidential Medal of Freedom
- 1964 *Hello, Dolly!* starring Carol Channing opens on Broadway
- 1965 National Book Committee’s Medal for Literature
- 1967 *The Eighth Day* (National Book Award for Fiction)
- 1973 *Theophilus North* (novel)
- 1975 Dies in sleep in Hamden, Connecticut, on December 7. Buried at Mt. Carmel Cemetery, Hamden, Connecticut

Our Town is made possible, in part, through generous underwriting support from Jan Elfline.

OUR TOWN © 1938, 1957 The Wilder Family LLC
 Copyright agent: Alan Brodie Representation Ltd
 www.alanbrodie.com

Production

- Director Lori Adams***±
- Scenic Design..... John C. Stark**±
- Costume DesignRenee Garcia**
- Lighting DesignHeather Reynolds±
- Sound Designer/ComposerAngela Joy Baldasare
- Stage Manager.....Noah Davidson±
- Fight Choreographer..... Zev Steinrock
- Assistant Fight Choreographer.....Brandon Ndagijimana ±
- Intimacy Director Zev Steinrock
- Voice and Text Coach..... Natalie Blackman±
- DramaturgyKee-Yoon Nahm
- Assistant Director Anna Oxborrow±

Cast

- Si Crowell/Townsperson..... Penny Barnett
- Dr. GibbsSteve Cardamone*
- Mrs. WebbRayme Cornell*
- Mrs. Gibbs..... Anne Marie Damman*
- Sam CraigIsaac Daniel
- Mrs. Soames..... Rosemarie Erban±
- Simon Stimson.....Andrew Faber±
- Wallace Webb Armon Gardner
- Joe Crowell Jr/Baseball Player/
 TownspersonAri Goldfarb
- Howie Newsome.....Dominic Gross
- Professor Willard/
 The Dead/Townsperson Jermaine Jenkins
- Woman in Balcony/
 Ensemble/The Dead/TownspersonSophia Joyce±
- Ensemble/Baseball Player/
 Townsperson Jeremiah King
- Mr. Webb.....Dan Matisa*
- Emily Webb.....Jadyn McCoy
- Rebecca Gibbs/The Dead/Townsperson.....Grace Mori
- Lady in Box/The Dead/
 Townsperson Anna Sluder Oxborrow±
- Constable Warren/Joe Stoddard.....Everett ‘Eazy’ Pervall
- Stage Manager.....Robert Quinlan±
- Belligerent Man/Baseball Player/
 /The Dead/Mr. Carter/TownspersonChris Ramshaw
- George GibbsWade Schacht

Understudies

- Emily/Mrs. Gibbs-Rosemarie Erban±, Mr. Webb-Andrew Faber±, Mrs. Webb/Lady in the Box/Woman among Dead-Sophia Joyce±, George Gibbs/Professor Willard-Jeremiah King, Stage Manager-Everett ‘Eazy’ Pervall, Mr. Gibbs-Chris Ramshaw

*Denotes membership in Actor’s Equity Association

**Denotes membership in United Scenic Artists

***Denotes membership in Stage Directors and Choreographers Society

± Denotes Faculty, Staff, Student, or Alumni of Illinois State University

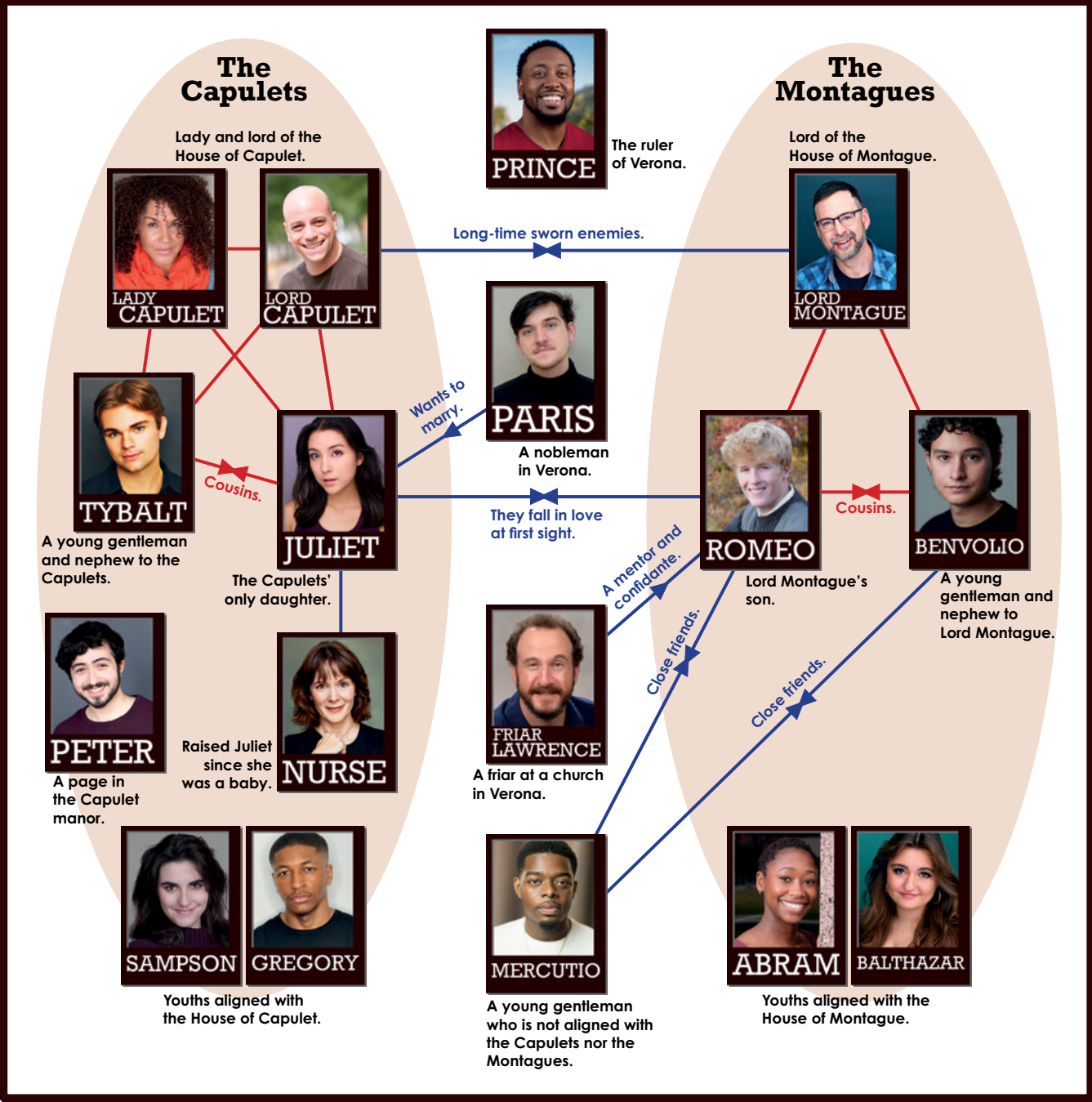
Our Town will be performed in three acts with two intermissions.

Romeo and Juliet

CHARACTER MAP



Diagram by Kee-Yoon Nahm



Our Town CHARACTER MAP

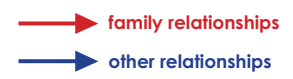
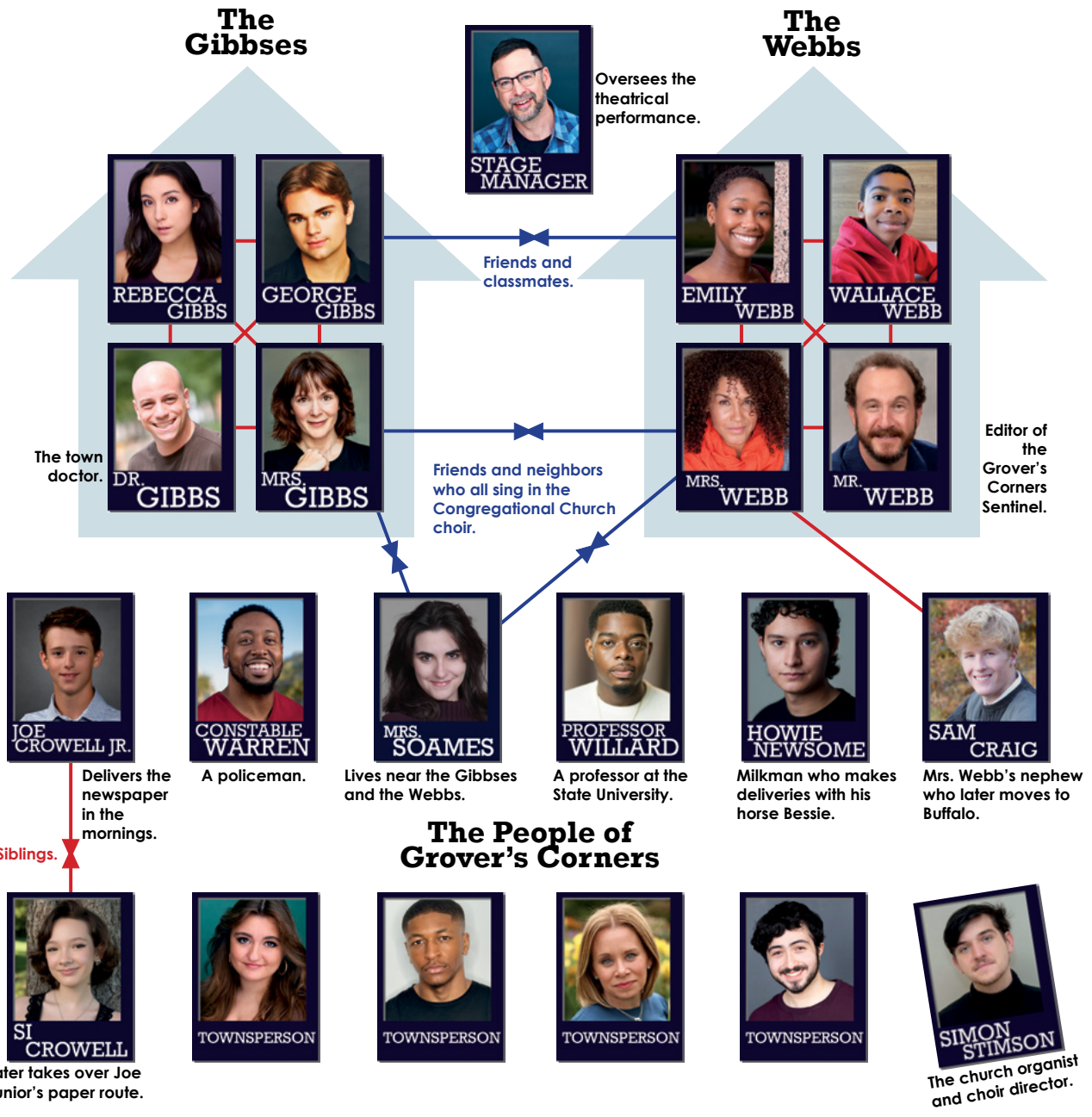


Diagram by Kee-Yoon Nahm



Director Bios

Lori Adams***±-(Director, *Our Town* and *Get Set, Romeo and Juliet*) returns for her 14th season with ISF where she has directed the Theatre for Young Audiences productions and, in 2023, *The Book of Will*. Other credits include the Off-Broadway production of *Falling* (three Drama Desk Award nominations) and Nebraska Repertory Theatre (*POTUS*, *Tigers Be Still*), Mustard Seed Theatre, Heartland Theatre Company, Prairie Fire Theatre, Nomad Theatre and resident director of the Holiday Spectacular, Inc. An ISU Professor emerita of acting, Lori is a proud member of SDC (Stage Directors and Choreographers Society).

María Amenábar Farias±-(Director, *Romeo and Juliet*) is a director/producer from Guatemala who holds an MFA in Directing from Illinois State University. She currently serves as the Artistic Producing Associate at Milwaukee Repertory Theater, where she will be directing *Somewhere* by Matthew López in their upcoming season. Favorite directing credits include *How I Learned to Drive*, *Good Kids*, *The Thanksgiving Play*, *Bonnie and Clyde: The Musical* and *Heathers: The Musical*. Instagram: @mariadirects.

Robert Quinlan±-(Artistic Director, Bard Bash Director, Actor) is the eighth artistic director of ISF where he directed last season's *The Importance of Being Ernest*. He won the Saint Louis Theatre Circle Award (Best Director of a Musical) for *Into the Woods* (2024) at The New Jewish Theatre. Acting credits include productions with the Tennessee Williams Festival in Provincetown, Massachusetts (*Men from the Polar Star* and *Why Did Desdemona Love the Moor?*), Arkansas Shakespeare (*My Fair Lady*) as well as ISF (*The Comedy of Errors*). He heads the MFA Directing program at Illinois State University (also an alum) and holds a BFA in Acting from University of Illinois Urbana-Champaign.

Danielle Roos-(Director, *The Two Gentlemen of Verona*) is honored to be directing at ISF. Danielle is an Assistant Professor of Graduate Directing at Texas State University and has her MFA in Directing from Northwestern University. Danielle

was Goodman Theatre's Northwestern Directing Fellow from 2023-2024 and is an Associate Member of SDC. Directing credits include *Cabaret*, *The Busie Body*, *The Flick*, *Woyzek*, *Julius Caesar*, and *Princess Cut* (which she co-wrote, directed and produced for the New York International Fringe Festival).

The Acting Company

Penny Barnett-Si Crowell/Townsperson (*Our Town*) is making her ISF debut. She previously appeared in ISF's Broadway Basics camp cabaret and in Shakespeare's Apprentices *A Midsummer Night's Dream* as Puck. Other credits include Summer Hathaway in *School of Rock* (Little Theatre on the Square), Louise in *Sunday in the Park with George*, and Children's Ensemble in *The Music Man* (Oklahoma Opera and Music Theater Company). Penny is a 7th grader who dreams of pursuing acting in the future.

Steve Cardamone*-Sir Eglamour (*The Two Gentleman of Verona*), Lord Capulet (*Romeo and Juliet*), Dr. Gibbs (*Our Town*) is happy to be part of the ISF community this summer. He received an M.F.A. from the University of Delaware's Professional Theater Training Program and was a founding member of Shenandoah Shakespeare Express (now the American Shakespeare Center) in Staunton, Virginia. He is a faculty member for the University of Minnesota BFA Actor Training Program in Minneapolis. Regional credits include roles at Oregon, Idaho, Colorado, Texas, Nebraska, and Pennsylvania Shakespeare Festivals, Riverside Theater (Iowa City), Hope Repertory (MI), the Delaware Theater Company, and Chicago area theaters.

Rayme Cornell*-The Duchess (*The Two Gentleman of Verona*), Lady Capulet (*Romeo and Juliet*), Mrs. Webb (*Our Town*) (she/her/hers) Is thrilled to be returning to the Ewing stage! Rayme has been a Professional Actor for over 25 years. She is a member of the Screen Actors Guild, American Federation of Television and Radio Artists and Actors Equity Association. Rayme is an Associate Professor of Acting at the Sargent Conservatory at Webster University. Rayme began her teaching career as an Assistant Professor in the Stage and

Screen Acting program at the University of Nevada Las Vegas, where she taught in the Graduate and Undergraduate performance programs. She has worked in film, television, Off Broadway and with some of the most prestigious Regional Theatres. Rayme is a private coach for professionals. A Teaching Artist at the Don LaFontaine VO Lab for the SAG Foundation in LA and New York, Rayme is also known for her extensive Voice-Over work. Her greatest role to date is that of being Brick's Mom.

Anne Marie Damman*-Lucetta (*The Two Gentleman of Verona*), Nurse (*Romeo and Juliet*), Mrs. Gibbs (*Our Town*) is excited to make her debut at ISF. She is a graduate of LAMDA, and has worked on stages ranging from Texas Shakespeare Festival to Cincinnati Playhouse in the Park, voiced hundreds of audiobooks from major and minor publishers alike, and worked globally as a presenter for Chevrolet, Google, and other major corporations. Anne is also a professor, currently teaching at Purdue University, and a certified Alba Method Teacher. Proud member of Equity. Many thanks to Mitch and Maizey for their support!

Isaac Daniel-Valentine (*The Two Gentleman of Verona*), Romeo (*Romeo and Juliet*), Sam Craig (*Our Town*) is honored to be among such talented artists in his first season with the Illinois Shakespeare Festival. He is currently pursuing a BFA in Acting at the University of Minnesota. Recent credits include *Julius Caesar*, *Pocahontas*, and *Picnic* at American Players Theatre. In the fall, he will study in London with the Royal Shakespeare Company. None of this would be possible without the love and guidance of his friends and family. Thank you for supporting the arts!

Rosemarie Erban±-Outlaw 3 (*The Two Gentleman of Verona*), Sampson/Petruchio/Second (*Romeo and Juliet*), Mrs. Soames (*Our Town*), Storyteller/Nurse (*Get, Set, Romeo and Juliet!*) is very excited to be a part of her first professional company with ISF this season. She is an upcoming senior at Illinois State University and can be seen in their production of *Julius Caesar* next fall. Previously she has performed at Illinois State as Bernie in *Borrowed Babies* and Florinda in *Into the Woods*.

She would like to thank her parents for all their love and support.

Andrew Faber±-Outlaw 5 (*The Two Gentleman of Verona*), Paris (*Romeo and Juliet*), Simon Stimson (*Our Town*), Tybalt/Capulet (*Get, Set, Romeo and Juliet!*) is a senior acting major and stage combat minor at Illinois State University. He is the recipient of the 2026 Region 3 Irene Ryan Scholarship award and has done a variety of projects at Illinois State. Some of his most notable projects include, Dr. Victor Frankenstein in *Frankenstein*, Monster from *A Monster Calls*, Mark Rothko from *Red* and Demetrius from *A Midsummer Nights Dream*, just to name a few. Andrew is beyond excited to make his professional debut here at ISF, and is beyond thankful to his family, friends and fellow artists for their invaluable love and support. He couldn't have done it without you and is beyond excited to see what the future holds!

Armon Gardner-Wallace Webb (*Our Town*) is very excited to make his professional acting debut in *Our Town* as Wallace Webb. He has been in a number of local productions, such as the yearly Holiday Spectacular shows at the BCPA, and every school musical since fifth grade! Armon plays alto saxophone, harmonica, and guitar, among other instruments. During his spare time (especially backstage), Armon loves to entertain as an amateur magician.

Ari Goldfarb-Joe Crowell Jr/Baseball Player/Townsperson (*Our Town*) is excited to be appearing in his second Illinois Shakespeare Festival production. An incoming freshman at University High School in Normal, Ari enjoys balancing his passion for theater with baseball, golf and 3D printing. Favorite past roles include Prince Hans (*Frozen Jr.*), Danny (*Xanadu Jr.*), and a Wickersham Brother (*Seussical*) at Thomas Metcalf School, as well as Macduff's Son, Apparition, and Messenger in Illinois Shakespeare Festival's *Macbeth* in 2024. He is grateful for the opportunity to return to ISF and would like to thank his family, friends, and directors for their support.

Dominic Gross-Proteus (*The Two Gentleman of Verona*), Benvolio (*Romeo and Juliet*), Howie Newsome (*Our Town*) returns for his fourth season this summer. He was most recently seen on the Ewing stage as Algernon in *The Importance of Being Earnest* and Lysander in *A Midsummer Night's Dream*. He was an intern in the summer of 2023. Other credits include *Grief Camp* Off-Broadway at the Atlantic Theatre Company, and *Hamlet* at UT Austin. Dominic is thrilled to be welcomed back yet again to do Shakespeare in the most beautiful place in the land.

Jermaine Jenkins-Launce (*The Two Gentlemen of Verona*) Mercutio (*Romeo and Juliet*), Professor Willard/The Dead/Townsperson (*Our Town*) is honored to be making his ISF debut with such an incredible season. He is overwhelmed with gratitude to be able to learn and grow alongside so many inspiring artists. Most recently, he earned a BFA in Acting from the Chicago College of Performing Arts at Roosevelt University.

Sophia Joyce±-Hostess (*The Two Gentleman of Verona*), Balthazar (*Romeo and Juliet*), Woman in Balcony/Ensemble/The Dead/Townsperson (*Our Town*), Juliet (*Get, Set, Romeo and Juliet!*) is thrilled to be joining the ISF company. Last year, she directed for ISF's Shakespeare's Apprentices production of *A Midsummer Night's Dream* and is ecstatic to be acting here this summer. A senior at ISU majoring in Acting and Theatre Teacher Education, she will graduate in December upon completing student teaching. Sophia adored her time on the ISU stages in roles including Hermia (*A Midsummer Night's Dream*), Annabella/Pamela (*The 39 Steps*), Abby Brewster (*Arsenic and Old Lace*), Mother (*Blood Wedding*), Mary Shelley (*Frankenstein*), Ellen (*The Art of Dining*), and others.

Jeremiah King-Panthino/Outlaw 2 (*The Two Gentleman of Verona*), Gregory/Paris' Page (*Romeo and Juliet*), Ensemble/Baseball Player/Townsperson (*Our Town*), Romeo (*Get, Set, Romeo and Juliet!*) Jeremiah King is thrilled to be joining ISF. The St. Louis native is a rising senior currently pursuing a BFA in Acting at Webster University's Sargent Conservatory of Theatre

Arts. (Actor 2 in *Seize the King*, George Gibbs in *Our Town*). He made his professional debut last summer with the Tennessee Williams Festival in St. Louis as the Young Collector in *A Streetcar Named Desire*. He would like to thank God, his family, and friends!

Daniel Matisa*-Antonio/Thurio (*The Two Gentleman of Verona*), Friar (*Romeo and Juliet*), Mr. Webb (*Our Town*) is overjoyed to return for his fifth season with ISF, where he's played Leontes/Autolycus in *The Winter's Tale*, Lucio in *Measure for Measure*, Kent in *King Lear*, Dogberry in *Much Ado about Nothing*, Toby Belch in *Twelfth Night*, Polonius/Gravedigger in *Hamlet*, Lane/Merriman in *The Importance of Being Earnest*, and Bottom in *A Midsummer Night's Dream*. Dan is an Associate Professor at Bradley University. MFA: FSU/Asolo. BA: Hofstra. Proud member of AEA. Many thanks to Robert Quinlan, and to the directors, designers, cast, crew, and staff. Love to my family, and to my Lemon Pie.

Jadyn McCoy-Silvia (*The Two Gentleman of Verona*), Abram/First Watch (*Romeo and Juliet*), Emily Webb (*Our Town*) is a native of Raleigh, North Carolina, and is excited to make her ISF debut. She is a second-year graduate student in the Professional Actor Training Program at the University of Houston. She received her BFA in Professional Theatre from North Carolina Agricultural and Technical State University. Selected credits include Lady Anne in *Richard III*, Puck in *A Midsummer Night's Dream*, Elmire in *Tartuffe*, Narcissa in *Restoration Comedy*, and Shelby in *Baltimore*.

Grace Mori-Julia (*The Two Gentlemen of Verona*), Juliet (*Romeo and Juliet*), Rebecca Gibbs/The Dead/Townsperson (*Our Town*) is thrilled to return to ISF, where she played Ophelia (*Hamlet*), Hermia (*A Midsummer Night's Dream*) and Cecily (*The Importance of Being Earnest*). Raised in NYC, Hong Kong, and Japan, Grace holds a BFA in Acting from UNCSA. Other credits include: Viola (*Twelfth Night*), Zuzu (*Dance Nation*), and *Sex&Drugs&Rock&Roll* (FX). Thanks to her collaborators this season, Brave Artists Management, DDO, and her family for their support!

Anna Sluder Oxborrow±-Assistant Director, Lady In Box/The Dead/Townsperson (*Our Town*) is delighted to be joining the Illinois Shakespeare Festival this summer season! Anna is a graduate student in Theatre Studies at Illinois State University. Most recently, in 2025, she directed *Pride and Prejudice* at Corn Stock Theatre. Previously, she performed as Cassandra in *Vanya*, *Sonya*, *Masha*, and *Spike*. She would like to thank her parents, husband, and children for their support.

Everett "Eazy" Pervall-Mercatio/Outlaw 1 (*The Two Gentleman of Verona*), Prince/Friar John (*Romeo and Juliet*), Constable Warren/Joe Stoddard (*Our Town*) is thrilled to be part of ISF this summer. Originally from Memphis, Tennessee, he served 10 years in the U.S. Navy as a Hospital Corpsman before pursuing his passion for the arts. He studied film at Scottsdale Community College in Arizona and is currently training in the BFA Acting program at the University of Minnesota.

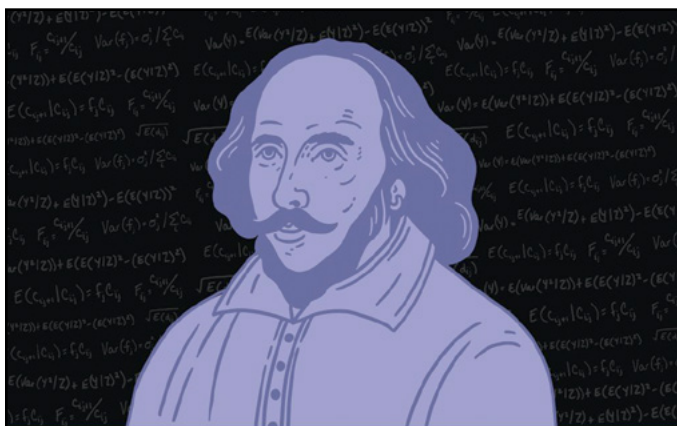
Chris Ramshaw-Outlaw 4 (*The Two Gentleman of Verona*), Peter/Third Watch (*Romeo and Juliet*), Belligerent Man/Baseball Player/The Dead/Mr. Carter/Townsperson (*Our Town*), Mercutio/Bird, etc. (*Get, Set, Romeo and Juliet!*) is thrilled to be making his Illinois Shakespeare Debut! He is a rising junior at the University of Illinois, pursuing a Bachelor of Fine Arts in Acting. Some recent credits include Bowden in *The City & the City*, and Alfieri in *A View from the Bridge* (Illinois Theatre). At Illinois Theatre this fall, he will play Colonel Brandon in *Sense and Sensibility*. He hopes you enjoy the shows, and prosper in the magic of live, outdoor theatre.

Wade Schacht-Speed (*The Two Gentleman of Verona*), Tybalt (*Romeo and Juliet*), George Gibbs (*Our Town*) is ecstatic to be making his ISF debut. A Champaign native, he is a rising Senior BFA Acting candidate at Illinois Wesleyan University, where his credits include *All My Sons* (Chris Keller), *Pride and Prejudice* (Mr. Collins), and *Execution of Justice* (Dan White). He performed at the Woodstock Playhouse throughout their 2024 summer season. He is eternally grateful for his family, girlfriend, friends, and theatre making community at IWU. TGOE!"

*Denotes membership in Actors' Equity Association.

***Denotes membership in Stage Directors and Choreographers Society

± Denotes Faculty, Staff, Student, or Alumni of Illinois State University



Pinnacle Actuarial Resources is proud to support the Illinois Shakespeare Festival's 2026 season!



Making the *local national* and the *national local*.

What you hear
changes everything.



n p r Network

WGLT.org
89.1FM

Bloomington-Normal's Public Media

The Acting Company



Penny Barnett



Steve Cardamone*



Rayme Cornell*



Anne Marie Damman*



Isaac Daniel



Rosemarie Erban±



Andrew Faber±



Armon Gardner



Ari Goldfarb



Dominic Gross



Jermaine Jenkins



Sophia Joyce±



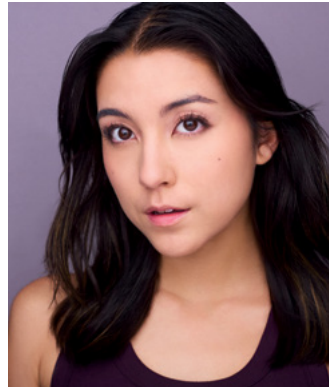
Jeremiah King



Daniel Matisa*



Jadyn McCoy



Grace Mori



Anna Sluder Oxborrow±



Everett "Eazy" Pervall



Robert Quinlan±



Chris Ramshaw



Wade Schacht



Scout

Stage Manager Bios

Lucy Yahr*±-(Production Stage Manager, Stage Manager, *The Two Gentlemen of Verona*) is delighted to return for her seventh season with the Illinois Shakespeare Festival. Previous work for the Festival includes: Assistant Stage Manager for *The Merry Wives of Windsor* (2018); Stage Manager for *Pride and Prejudice* (2019), *Measure for Measure* (2021); Production Stage Manager for *The Complete Works of William Shakespeare (Abridged)* (2022), *King Lear* (2022), *The Tempest* (2023). Lucy is a proud member of Actors' Equity Association.

Rose Geovanes±-(Stage Manager, *Romeo and Juliet*) returns for their second season at ISF. They previously served as a stage management intern in 2023 and are thrilled to be back. Rose is a proud graduate of Illinois State University and currently works as the Assistant Production Manager at Roosevelt University's Theatre Conservatory. They hope you enjoy the show!

Noah Davidson±-(Stage Manager, *Our Town*) is thrilled to be returning for his 4th season at the Illinois Shakespeare Festival. Aside from his time at ISF, Noah has worked on contracts at The Santa Fe Opera, Walt Disney World, and Starz Dance Competition. He would like to thank his parents, Tina and Mike, for starting, and always supporting his love of theatre.

Designer Bios

Angela Joy Baldasare-(Festival Sound Designer) Select Sound Design Credits: *The Targeted*, A Red Orchid Theatre (sound designer), *Six Men Dressed Like Joseph Stalin*, A Red Orchid Theatre (sound designer), *Every Brilliant Thing*, Writers Theatre (co-sound designer), *Big White Fog*, Court Theater, (assistant sound designer), *Little Bear Ridge Road*, Steppenwolf Theatre (assistant sound designer), *Dance Nation*, University of Illinois Chicago (sound designer), *Spaceman*, [producingbody] (sound designer), *Bottlefly*, Redtwist Theatre (sound designer), *Wolves*, Redtwist Theatre (sound designer) Awards: The Michael Philippi Prize for Best Exhibit: Professional Designer (2024) Website: angelajoybaldasare.com/sound-design

Renee Garcia**-(Costume Designer, *Romeo and Juliet*, *Our Town*) is an award-winning designer and member of USA Local 829. Designing credits include The Repertory Theatre of St. Louis (*Athena*, *The Cottage*, *Ring of Fire*), Metro Theatre (*Eddie & Vinnie*), Lake Dillon Theatre Company (*Cabaret*), The Riverside Shakespeare Festival (*Romeo and Juliet*, *The Two Gentlemen of Verona*), The Unicorn Theatre (*Green Whales*), and The Coterie Theatre (*The Macbeth Project: In Spite of Thunder*). Her designs have been displayed in exhibits in Prague, Mexico, and Romania.

Heather Reynolds±-(Festival Lighting Designer) is excited to spend her third summer with the Festival. Selected Credits: *Prayer for the French Republic* at The New Jewish Theatre; *Cinderella*, *Disaster!*, and *A Christmas Story* for Arizona Broadway Theatre; *Don Giovanni* and *La Bohème* for Maryland Opera Studio; *Hookman* and *By the Way, Meet Vera Stark* at the University of Maryland; *Head Over Heels* at George Mason University; *Urinetown*, *Assassins*, and *The Laramie Project* for Southern Utah University. A proud graduate of Florida State University and the University of Maryland, she also serves as Assistant Professor of Lighting Design and head of the M.F.A in Lighting Design at Illinois State University. www.hreynoldsdesign.com

Zandra Siple-(Costume Designer, *Two Gentlemen of Verona*) she/her, is making her Illinois Shakespeare Festival debut this season! She earned her BFA in Design and Technical Theatre Production from Western Michigan University and MFA in Theatre Costume Design from The Pennsylvania State University. Zandra is an Assistant Professor of Costume Design and Technology at Illinois Wesleyan University where she is the resident costume designer.

John C. Stark**±-(Festival Scene Designer) 2026 is John's 26th season at ISF. He has designed scenery for 51 productions, beginning with *Pericles* in 1993 and including 2024's *Twelfth Night*, *Sense and Sensibility*, and *Macbeth*. He served as the Artistic Director from 2017-2024. Recent work includes *The Baker's Wife* for Prairie Fire Theatre, *An Enemy of the People* at Heartland

Theatre and the upcoming *Blithe Spirit* at Millikin University. John is an Illinois State University Professor Emeritus of Scene Design where he taught for 32 years.

Artistic Staff Bios

Natalie Blackman±-(Voice, Text and Dialect Coach) is a certified teacher of Fitzmaurice Voicework® and Knight-Thompson Speechwork™, and has worked as a professional actor in New York and across the United States for nearly 20 years. She currently serves as Assistant Professor of Voice and Acting at the University of North Carolina at Greensboro. As an actor, her New York credits include work at The Duke on 42nd Street, Circle in the Square, Theatre Row, the New Ohio Theatre, and The Tank. Regional acting credits include the Illinois Shakespeare Festival, the Utah Shakespeare Festival, Pioneer Theatre Company, Penfold Theatre Company, Burning Coal Theatre Company, and the Classic Theatre of San Antonio. Her solo show, *Disorder*, was a bestseller and award winner at the United Solo Festival in New York City, the world's largest solo theatre festival. Blackman holds an MFA in Classical Acting and Civic Engagement from Illinois State University and a BFA from the University of Utah's Actor Training Program. natalieblackman.com

Nancy Steele Brokaw-(Playwright, *Get, Set, Romeo and Juliet!*) has written many ISF Theatre for Young Audiences shows. She recently toured with *Quack-a-Doodle-Do*, her 16th children's opera for Prairie Fire Theatre/Illinois Wesleyan University. Another of her operas is on tour in California. She wrote *Leaving Emma* (Clarion/Houghton Mifflin) and the libretto for *Fertile Ground*, which premiered at the Fort Worth Opera. Brokaw is a longtime contributor to *The Pantagraph* and resident playwright for Holiday Spectacular. She was the 2025 recipient of the Illinois Wesleyan Distinguished Humanities Alumnus Award. nancysteelebrokaw.com

Kee-Yoon Nahm-(Festival Dramaturg) is Visiting Associate Professor of Dramaturgy and Dramatic Criticism at Yale University's David Geffen School of Drama. In addition to his work at ISF, which

includes the Beyond the Stage article series, his dramaturgy and translations have been presented at Yale Repertory Theatre, the Brooklyn Academy of Music, Detroit Opera, Significant Productions, Coalescence Theatre Project, the National Theatre Company of Korea, the National Dance Company of Korea, and the Seoul Performing Arts Festival, among others.

Laina Reese±-(Choreographer, *Romeo and Juliet*) is excited to be back at the Festival choreographing! A performing artist, choreographer, and writer- Laina holds an MFA in Dance Performance & Pedagogy and a Certificate in Feminist Methodologies & Sexualities from Arizona State University, and a BFA in Dance from the University of Illinois at Urbana-Champaign. Her professional performance background includes study and touring with The Ailey School, A.I.M. by Kyle Abraham, Joel Hall Dancers & Center, and other commercial and concert dance organizations. Her choreographic work has been recognized nationally and chosen to perform at venues including the Tempe Center for The Arts, Athenaeum Theatre, Links Hall, and The John F. Kennedy Center in Washington, D.C. Laina specializes in contemporary modern, jazz, and African American vernacular dance technique, with research focused on American dance history, decolonization, popular culture, and intersectionality. Laina currently serves as Associate Professor of Dance at Illinois State University and is a PhD student in Educational Administration and Foundations.

Karen Sheridan-(Mime Coach, *Our Town*) is delighted to be back at Illinois Shakespeare where she directed 1999's *The Merry Wives of Windsor*. She is an actor, director, mime and dialect coach (seriously), emerita professor at Oakland University and a proud Equity member- Detroit Public, Flint Rep, Peninsula Players, Meadow Brook, Williamston and others. What a dream to share a moment with Lori Adams, her company and the heartfelt lessons of this small American town.

Zev Steinrock-(Intimacy Director, Fight Choreographer) is thrilled to be back with the Illinois Shakespeare Festival! A professional intimacy director, fight director, teacher, and

performer, Zev holds certifications from Intimacy Directors & Coordinators and the Society of American Fight Directors and currently serves as an Assistant Professor of Acting at the University of Illinois Urbana-Champaign. National Fight and Intimacy Direction credits include the Chicago Shakespeare Theatre, South Coast Repertory Theatre, Paper Mill Playhouse, Notre Dame Shakespeare Festival, Arkansas Shakespeare Festival, St. Louis Shakespeare Festival, The New Jewish Theatre, and Definition Theatre Company.

Festival Leadership Bios

Nick Benson±-(Manager, Center for the Performing Arts) is the Center for the Performing Arts Manager, coordinating event logistics, box office, and front of house staff for Wonsook Kim College of Fine Arts and Illinois Symphony Orchestra performances. Benson holds an MBA from Loyola University Chicago and a B.S. in Music Business from ISU. Outside of ISU, Benson has served on the Board of Governors for Community Players Theatre, is an active performer and volunteer in several local Arts organizations, and enjoys spending time with his wife and their crazy red heeler.

Jimmy Chrismon±-(Theatre Education Supervisor) is an Associate Professor of Theatre and Program Coordinator for Theatre Teacher Education at Illinois State University. A former high school theatre teacher, he specializes in trauma-informed and consent-based practices in educational theatre, intimacy direction, and theatre teacher training. Dr. Chrismon is a nationally recognized speaker, workshop facilitator, and podcast host of *THED Talks*, a resource for theatre educators heard in nearly 100 countries. His work bridges artistry, wellness, and pedagogy, with a focus on creating collaborative, inclusive, and human-centered spaces for students, educators, and artists.

Brendan Greene-Walsh-(Technical Director) is an educator, technical director and freelance scenic and lighting designer. This is his first summer with ISF. He is an assistant professor and technical director in the School of Theatre and Dance at Millikin University. Brendan completed his undergraduate studies at Creighton University

and received his MFA from the University of Nebraska in theatre design and technology. He has previously worked with The Blue Barn Theatre, Great Plains Theatre Commons, The Pottawatomie Arts Culture Entertainment Center, American Midwest Ballet and Nebraska Shakespeare Festival as well as others.

Ann Haugo±-(Producer) is Director of the School of Theatre, Dance, and Film and affiliated faculty for Women's, Gender, and Sexuality Studies; Native American Studies; and Ethnic Studies. Her research focuses on Native American and First Nations theatre/performance. A Past President and Fellow of the Mid-America Theatre Conference; founding convener of the Indigenous Americas working group within the American Society for Theatre Research; and former Advisory Board member for Project HOOP (Honoring Our Origins and People through Native Theatre, Education, and Community Development), Haugo holds a Ph.D. (Theatre History) from UIUC and currently serves on the Commission for the National Association of Schools of Theatre.

Marty Lynch±-(Budget Manager) is proud to be working on his second season at ISF. Regional credits include Bigfork Summer Playhouse, Peach State Summer Theatre, Stagedoor Manor, Theater at Monmouth, The Lost Colony, Clarence Brown Theatre, and Round House Theatre. Other work: Royal Caribbean International, Valdosta State University, Eureka College. BFA: West Virginia University, MFA: University of Tennessee, PhD (soon!): Illinois State University. Special thanks and love to my wonderful family.

Allie Nicholson±-(Production Manager) is excited to be a part of the Illinois Shakespeare Festival as Production Manager after being part of the company as an Assistant Stage Manager in 2017 and 2018. She is grateful for the opportunity to be part of such an important community event in the Bloomington-Normal area. Selected Stage Management work includes *A Midsummer Night's Dream* and *Shakespeare in Love* with Illinois Shakespeare Festival, *Blind Date* with Goodman Theatre, *Oil* and *Stupid F***ing Bird* with Swine Palace, and *Mr. Burns, A Post-Electric Play* with Louisiana State University Theatre.

Al Oltmanns±-(General Manager) Al Oltmanns is a director, playwright, and educator. They possess an MFA in Theatre Directing from Illinois State University, an MFA in Creative Writing from Columbia College Chicago, and completed additional graduate studies in Theatre through New York University and the Broadway Teachers Workshop/University Nevada, Las Vegas. Al currently serves Bradley University's Department of Theatre Arts as Directing Faculty, Illinois Central College as Performance Faculty, and is the newly appointed Artistic Director of Heartland Theatre Company.

Kyle Pingel-Hickey±-(Costume Shop Director) Kyle Pingel-Hickey is excited to return to the Illinois Shakespeare Festival as Costume Shop Director. Most recently, Kyle served as Costume Shop Director for the School of Theatre, Dance, and Film at ISU. In addition to his theatrical work, Kyle owns KPingel Wigs, specializing in custom drag and theatrical wigs. Recent wig credits include Montana Shakespeare in the Parks, Peninsula Players Theatre, and Royal Caribbean International. Kyle has worked throughout the Midwest in professional theatre, costume production, and wig design.

Natasha Warloe±-(Personnel and Communications Manager) is a recent graduate of Illinois State with her M.S. in Theatre Studies from the School of Theatre, Dance, and Film. She also holds her B.F.A in Acting from Tisch School of the Arts, New York University. Warloe worked with Columbia University's M.F.A Directing Program and the MXAT at the ART, Harvard University. Warloe is an actor, director, theatre educator, and producer recently for Heartland Theatre Company, Nomad Theatre, and Community Players Theatre.

**Denotes member of Actors' Equity Association*

*** Denotes Membership in United Scenic Artists*

± Denotes Faculty, Staff, Student, or Alumni of Illinois State University

OUR 104TH SEASON • www.CommunityPlayers.org

Community Players THEATRE

Angels in AMERICA
PART ONE: MILLENNIUM APPROACHES
SEPTEMBER 2026

PIPPIN
NOVEMBER 2026

BARBECUE
JANUARY 2027

ASSASSINS
MARCH 2027

SHE KILLS MONSTERS
MAY 2027

Disney FROZEN
THE BROADWAY MUSICAL
JULY 2027

Leadership

Robert Quinlan±, Artistic Director

Ann Haugo±, Producer

Marty Lynch±, Budget Manager

Allie Nicholson±, Production Manager

Natasha Warloe±, Personnel and Communications Manager

Al Oltmanns±, General Manager

Nick Benson±, Manager, Center for the Performing Arts

Jimmy Chrismon±, Theatre Education Supervisor

Brendan Greene-Walsh, Technical Director

Dave George±, Assistant Technical Director

Kee-Yoon Nahm, Dramaturg

Kyle Pingel-Hickey±, Costume Shop Director

J. Wendy Wallace±, Craft Shop Supervisor

Lawrence Lair±, Festival Artist

Scott Ireland±, Dean, Wonsook Kim College of Fine Arts

Keaton Halm±, Marketing Intern

T'ana Muttalib±, Marketing Intern

Ewing Manor Leadership/Staff

Lyndsey Carney Director, Ewing Cultural Center, University Advancement Facilities

Toni Tucker, Director Ewing Cultural Center

Josh Eiskamp, Grounds Staff

Kim Elder, Grounds Staff

Heaven Stricklin, Building Service Worker

Company Management

Stephanie Nauman±, Company Manager

Maggie Shackley±, Assistant Company Manager

Stage Management

Lucy Yahr*±, Equity Production Stage Manager, Stage Manager (*The Two Gentlemen of Verona*)

Rose Geovanese±, Stage Manager (*Romeo and Juliet*)

Noah Davidson±, Stage Manager (*Our Town*)

Emily Bensing±, Stage Manager (*Get, Set, Romeo and Juliet!*), Assistant Stage Manager (*The Two Gentlemen of Verona*)

Jess Bolda±, Assistant Stage Manager (*Romeo and Juliet*, *Our Town*)

Charlie O'Connor, Assistant Stage Manager, (*Get, Set, Romeo and Juliet!*), Stage Management Intern (*Our Town*)

Brook Bolda±, Stage Management Intern (*The Two Gentlemen of Verona*), Deck Crew

Jilian Garris, Stage Management Intern (*Romeo and Juliet*), Deck Crew

Electrics and Sound

Elias Barton±, Assistant Lead Electrician/Electrics Crew

Emily Guzman±, Electrician/Electrics Crew

Julia Merritt±, Electrician/Electrics Crew

Tommy Ferguson±, Lighting Intern/Electrics Crew

Eden Wyandon, Sound Engineer/Sound Crew

Emery James±, Sound Technician

Charles Faulkner±, Sound Intern/Sound Crew

Costume and Crafts

Kyle Pingel-Hickey±, Costume Shop Director

J. Wendy Wallace±, Crafts Shop Supervisor

Lexi Metz±, Assistant Craft Shop Supervisor

Bria Trachsel, Assistant Costume Designer (*Romeo and Juliet* and *Our Town*)

Sky Graham, Assistant Costume Designer (*The Two Gentlemen of Verona*), Costume Designer (*Get Set, Romeo and Juliet*)

Serena Abel±, Cutter/Draper

Katie Zaragoza±, Cutter/Draper

Adrian Ewens, First Hand/Wardrobe Crew Head

Faustina Agyekumaa Adu±, First Hand/Wardrobe Crew Head

Lindsay Gnesios, Costume Technician/Wardrobe Crew Head

Savannah Laporte±, Costume Technician/Wardrobe Crew

Juno Staudacher±, Costume Technician/Wardrobe Crew

Alexis Shim, Costume Intern/
Wardrobe Crew

Sarah Morgan, Costume
Intern/Wardrobe Crew

Scenic and Paint

Brendan Greene-Walsh,
Technical Director

Dave George±, Assistant
Technical Director/Lead
Welder

Jason Stern, Scenic Installation/
Changeover Supervisor

JP Lockwood±, Carpenter/
Changeover Crew

Kaitlyn Crosby, Carpenter/
Changeover Crew

Hanna Laible-Seif, Carpentry
Intern/ Changeover Crew

Rhulain Fick, Carpentry Intern/
Deck Crew

Moriah Jestus, Scenic Charge
Artist

Olivia Turner, Scenic Artist/
Deck Crew

Prop Shop

Chelsea Broeker±, Prop Shop
Manager

Gillian Davenport±, Props
Artisan/ Deck Crew

Brandon Ndagijimana±, Prop
and Stage Combat Intern/
Deck Crew

Concessions/Gift Shop

Abaigael Uphoff±,
Concessions/Merchandise
Manager

Natalie Becker±, Concessions/
Merchandise Assistant

Aniyah Jones, Concessions/
Merchandise Assistant

Front of House

Neveah Bos±, House Manager

Seamus Green±, Usher

Christian Hofmann, Usher

Noah Montoya±, Usher

Jisel Ortiz±, Usher

Melanie Swan±, Usher

Jia Zuo±, Usher

Box Office

Grace Borre±

Neveah Bos±

Pat Dunn±

Kyle Gilles±

Meghan Hartigan±

Sam Rotar±

Cyena Ulloa±

Education

Jimmy Chrismon±, Theatre
Teacher Education Supervisor

Grace Borre±, Education
Associate

Nina Falco±, Education
Associate

Lucas Suchor±, Education
Associate

Izzy Wilson±, Education
Associate

*± Denotes Faculty, Staff,
Student, or Alumni of Illinois
State University*

JOY S Z M A J
Making Real Estate A Joy

COLDWELL BANKER
Real Estate Group

Buying or Selling your Home?
Experienced and Reliable

CHOOSE EXPERIENCE.
IT MATTERS.

Enjoy Shakespeare's plays
this summer...

IllinoisShakes.com
or by phone at
(309) 438-2535

Call Joy Szmaj
(309) 242-7253 Mobile

Thanks to Our Donors

Thank you to all of our donors! The levels listed below represent the total gifts made from October 1, 2024, through September 30, 2025. For information about how you can support Illinois Shakespeare Festival contact Shake@IllinoisState.edu.

\$10,000+

Mark Edelman
Sue Edmondson*
Estate of Priscilla J. Matthews
Theater League of Kansas City

\$5,000-\$9,999

Chris and Larry Eggan
Jerry and Carole Ringer
Sue Silvey
Craig Sutter
The Drake Zimmerman Group
Joan and Charles Vanden Eynden
Drake Zimmerman and Jan Elflin

\$1,000-\$4,999

John and Sharon Amdall
Jerry Antonini
J. Gordon and Sandra Bidner
Erich Brandt
Nancy Brokaw
Daniel and Debra Brownstone
John Capasso
Anita Carney
John Danenberger and Yuki Gottschaldt
Ann Durand
Mary and Gary Gemberling
Alvin and Elaine Goldfarb
Patricia Grogg
Paul and Sandra Harmon

Rose Hinze
Christie Lau
Phares O'Daffer
Jerald Payonk
Sylvia and Joe Penrod
Mary Quinlan
Scott and Janis Reynolds
John Ritter
John Stark and Lori Adams
Nancy Stevens
Katharine Stoeber
Thomas Stover
Edward Treadwell

\$750-\$999

Anonymous (2)
Wallace and Karen Bergmann
Jay-James Miller

\$500-\$749

Robert and Anne Beatty
Laura Berk
Richard and Penny Boser
Bruce and Jeannie Breitweiser
Carol and Gerry Chrisman
Wendy Duffy
Curtis Fox
John and Marilyn Freese
Nancy Fuchs and Terrence Phelan
George and Myra Gordon
Robert and Barbara Hathway
Ann Haugo and Steve Pelphrey

Leonard Hester
John Kirk
Lalita Gordhan Foundation Inc.
Lynda Lane
Nick Leforce
Debbie and Terry Lindberg
Robin and Kevin Moore
Rudolf and Armine Mortimer
Jeff Nicholson
Ronnie Patterson
Jeffrey Samp
Paul and Trudy Vogel I

\$250-\$499

Anonymous
Amy Armstrong
Benjamin Arnold
JoEllen and Robert Bahnsen
David and Janet Baker
Herman and Frances Brandau
Henry Brolick
Lyndsey and Adam Carney
Amy Chesser
Roger Day and Tami Martin
John Freed
Pete Guither
Diana and David Hauman
Heather and Matthew Hofert
Joseph and Elizabeth Johnston
Linda and Jared Lacy
Deborah Light
Carol Neely

Deborah Niemann-Boehle
Gregory and Holly Orlowski
Denis and Jennifer O'Shea
Cindy Ross-Ringer
Margaret and Russell Rutter
Sandra and Alan Sans
Jane Schurter
Robert and Karen Starckovich
Barbara Stevens
Joan Stralow
Joy and George Szmaj
Tim Tyler
Tammy Van Egtern
Phylis VerSteegh
Tom Weiland

\$100-\$249

Yogesh Agarwal
Jennifer Anderson
Angel LLC
Mary and Richard Beal
Allan Bell
Michael Boehle
Donald and Christine Buehler
Susan Meredith Burt
Ann Champion
Anthony Crubaugh and Polly
Bedford
Rita and John Danenberger
William and Mary Denham
Cassandra and J. Donleavy
David and Joanne Dowell
Jocelyn and Brendan Duncan
John Dunn
Lucille Eckrich
Ted Ewing and Lisa Christison
Ewing

Fletcher Farrar and Mary
Jessup
Mary and Paul Finrock
Deb Foley
William and Melissa Franey
Ann and Mark Frels
Carol Gardner
Kathy Gentry
Thomas Grogg and Kathy
McIntyre
Susan Hara
James and Heather Harcar
Michelle Harris
Karen and Joseph Haug
Kay Henrichs
Rebecca Hepner
Kenneth Higerson
Richard and Jan Hinely
Jane Hopkins
Eric and Terri Hoss
Peggy Hundley
Joy Hutchcraft
Harold and Kathy Johnson
Philip Johnson and Genna
Armstrong
Ray Johnson
Michael Jordan and Marjorie
Meegan-Jordan
Elizabeth and James Kater
Dan and Pamela Kelley
Lois Kelsey
Janet and Ira Kilgus
Steven and Meredith Knitter
Judy and Perry Kozicki
Vicki and Phil Krupa
Catherine Largent
Joshua Liming

Kathleen Lonbom
Cheryl Magnuson
Leigh Masen
Robert Mather
Edward Mcauley
Jennifer McCuistian
Gerald and Sandra McKean
Gregg Mecherle and Barbara
Pratt
Keri Mikuska
Joel and Diane Murphy
Nancy and Christopher
Murtaugh
Ruth and Thomas Novosad
Aileen Pagan Vega
Victor and Carol Palomino
Palomino Family Trust
Robert and Jennifer Parent
Sally Parry
Lyn Patton
Robert Quinlan
Dianne Sattinger
Kimberly and Jeff Scheirer
Thomas and Brenda Seibert
Kim Shennett
Shaila Simmons
Linda and Steven Spencer
Peter Stott
Tracey Sullivan-Covert
Matthew and Jean-Marie Taylor
Lisa Tekmetarovic and Patrick
Frendreis
Christopher Terven
Cindy and Jeff Tissue
David and Kendra Turley
Carol Vogel
Marilyn and David Walach

John and Melinda Walker
Marolyn Weber
Glenn and Janet Wilson
Joyce Wilson
Terry and Kathy Winn
Ani Yazedjian and Joseph
Hensleigh
Charles and Gwendolyn Yurieci

\$50-\$99

Michael Albers
Setsuko Ashina
Gary and Jean Baumhardt
Joshua Beal
Michael and Regina Biggs
Constance and Zachary Blick
Jasmine Bracey
Michael and Denise Cardinal
Amanda Cooper
Susan Dean
Martha and William Diebold
Herbert and Pamala Eaton

Carol Eovaldi
Jean and Kenneth Freeburn
Gregory and Jeanne Girard
Marlene Gregor
Matthew Gromer
Eldon* and Jane Haab
Michael and Susan Harrington
Nathaniel and Rebecca Herz
David Hirst
Janice Holder
Wendy Hollis
Alexis and Michael Kalish
Jessy Keeney
Kathleen Kirk and Anthony Rio
Suellen Kirkwood
David Krostal and Cristen
Monson
Vern Kujath
Karen and Craig Kummerow
Martin Langrall
Anne and Stephen Matter

John Mcguire
Brenda Miller
Gretchen Monti
Stephanie Nauman
Jerry and Alberta Newman
Amy Penne
Lisa and Michael Phillips
Jess and Fawn Ray
John and Barbara Richmond
Anne and Thomas Ringrose
Elizabeth Rust
Leann Rust
Vanette Schwartz
Dirk Shannabarger
G. Scott Sober and Sarah
Jacobs
Colleen Splitter
Aonover Tarhule and
Rozemarijn Tarhule-Lips
Ann White
Peter Whitmer
*deceased

**Do you want to add your
name to the list?**

**We are here because of
donors like you!**

**Scan the QR code or visit
IllinoisShakes.com/Giving**



Illinois Shakespeare Festival Lifetime Giving

As of January 30, 2026

Illinois Shakespeare Festival has enjoyed enormous success during the past four decades because of support from the Illinois State University Foundation, Wonsook Kim College of Fine Arts, School of Theatre, Dance, and Film and a multitude of visionary and deeply committed individuals. We express enduring gratitude to the following individuals for their giving.

\$500,000+

Bruce V. Green Trust
State Farm Companies Foundation
Craig Sutter

\$100,000-\$249,999

Anita Carney
Deanne Morgan
Phares O'Daffer
Jerry and Carole Ringer

\$25,000-\$74,999

John and Sharon Amdall
Jerry Antonini
Ann Durand
Chris and Larry Eggan
Estate of Priscilla J. Matthews
Alvin and Elaine Goldfarb
Patricia Grogg

Gigi and Frank Miles
Town of Normal
Judy Wright
Drake Zimmerman and Jan Elflin
*deceased

\$250,000-\$499,999

Paul and Sandra Harmon

\$75,000-\$99,999

Sue Edmondson*
Sue Silvey
Nancy Stevens



The John Stevens Equity Actor

The John Stevens Equity Actor is funded through the John Stevens Memorial Golf Outing. Sponsored by Nancy Stevens and the Illinois Shakespeare Festival Society, this event is held in June and honors the memory of John Stevens, a past president of the Illinois Shakespeare Society and a longtime Festival supporter.

The John Stevens Equity Actor for the 2026 season is Steve Cardamone.

Amber Quick (2025)

Nate Cheeseman and Jessica Dean Turner (2024)

Olivia D. Dawson (2023)

Rafael Untalan (2022)

Dan Matisa (2021)

Chauncy Thomas (2019)

Jordan Coughtry (2018)

Nisi Sturgis (2017)

Chris Amos (2016)

Robert Gerard Anderson (2015)

Deborah Staples (2014)

Amanda Catania (2013)

David Sitler (2012)

Gerson Dacanay (2011)

Kevin Rich (2010)

Michelle Shupe (2009)

Daniel Harray (2008)

Eddie Collins (2007)

Thomas Anthony Quinn (2006)

Illinois Shakespeare Festival Society

Founded in 1983, the Society is Central Illinois' community support wing of the Festival. It is comprised of individuals, businesses, corporations, and foundations. The Society's Board of Directors and various committees support the Festival and its programs, including the John Stevens Memorial Golf Outing, Bard Bash & Cabaret, and the Spring Meet and Greet. To learn more about participating, contact John Danenberger: danenberger@gmail.com

John Danenberger,
President

Erich Brandt, Vice
President

Jane Schurter,
Secretary

Anita Carney

Ann Durand

Jill Freeman

Cheryl Magnuson

Jay-James Miller

Ashley Montgomery

David Prete

Erik Rankin

Jerry Ringer

Sue Silvey

Nancy Stevens

Emily Grimany,
Student

Representative

Illinois Shakespeare Festival Endowments

Endowments for the Illinois Shakespeare Festival ensure the continued longevity and excellence of the Festival.

Paul and Sandra Harmon Shakespeare Endowment

Sutter Family Shakespeare Scholarship

Sue Edmondson Endowment for Shakespeare

Calvin MacLean Endowment Fund

Illinois Shakespeare Festival Society Endowment

SPECIAL EVENTS



Bard Basics

Join us on select evenings at 6:30 p.m. for a pre-show session with our Artistic Director, Robert Quinlan, or another member of the artistic staff to learn more about that evening's play!

The Two Gentleman of Verona: Sunday, June 28, Sunday, July 19, Tuesday, July 21

Romeo and Juliet: Tuesday, July 14 & Sunday, July 26, Tuesday, July 28

Our Town: Wednesday, July 15, Wednesday, July 22, Thursday, July 30

Talk Backs

Join us in the courtyard after a performance listed below for a talk-back hosted by Artistic Director Robert Quinlan with free ice cream sponsored by Festival patron Craig Sutter.

The Two Gentleman of Verona: Thursday, July 16

Romeo and Juliet: Thursday, July 23

Our Town: Thursday, July 30

Courtyard Music Series

Join us in the courtyard on select nights for music by local artists, fellowship, and Falstaff's Pub. Sponsored by the Jerome Mirza Arts and Culture Fund at Illinois Prairie Community Foundation.

Follow us on social media or our website for dates and artists.

IllinoisShakes.com/events



Illinois Shakespeare Festival Production History

1978

As You Like It, Macbeth, Twelfth Night

1979

Hamlet, King Henry IV part 1, The Taming of the Shrew

1980

The Merry Wives of Windsor, A Midsummer Night's Dream, Romeo and Juliet

1981

The Comedy of Errors, Julius Caesar, The Winter's Tale

1982

King Henry IV part II, Love's Labour's Lost, Othello

1983

Macbeth, Much Ado About Nothing, The Two Gentlemen of Verona

1984

Pericles, The Merchant of Venice, The Taming of the Shrew

1985

Cymbeline, King Lear, A Midsummer Night's Dream

1986

As You Like It, Hamlet, The Tempest

1987

Measure for Measure, Romeo and Juliet, Twelfth Night

1988

All's Well That Ends Well, The Comedy of Errors, Richard III

1989

Henry V, The Merry Wives of Windsor, She Stoops to Conquer by Oliver Goldsmith

1990

Julius Caesar, Much Ado About Nothing, The Rivals by Richard Brinsley Sheridan

1991

Antony and Cleopatra, Othello, The Taming of the Shrew

1992

Macbeth, As You Like It, The Winter's Tale

1993

Richard II, Pericles, A Midsummer Night's Dream

1994

Romeo and Juliet, Two Gentlemen of Verona, Henry IV pt 1

1995

Cymbeline, Henry IV part 2, The Comedy of Errors

1996

Twelfth Night, The Tempest, The Triumph of Love by Marivaux

1997

Hamlet, All's Well That Ends Well, Rosencrantz and Guildenstern are Dead by Tom Stoppard

1998

Much Ado About Nothing, Measure for Measure, The Falcon's Pitch adapted by Jeffrey Sweet

1999

The Merry Wives of Windsor, Richard III, Wild Oats by John O'Keefe

2000

Taming of the Shrew, King John, The Three Musketeers adapted by Eberle Thomas and Barbara Redmond

2001

Love's Labour's Lost, Othello, Coriolanus

2002

A Midsummer Night's Dream, Romeo and Juliet, The Merchant of Venice

2003

King Lear, As You Like It, The Knight of the Burning Pestle by Francis Beaumont and John Fletcher

2004

Hamlet, The Two Gentlemen of Verona, Cyrano de Bergerac by Edmund Rostand

2005

Macbeth, Twelfth Night, Henry VIII

2006

The Comedy of Errors, Pericles, Julius Caesar

2007

Much Ado About Nothing, Henry V, Love's Labour's Lost

2008

The Taming of the Shrew, Titus Andronicus, The Complete Works of William Shakespeare (Abridged) by Adam Long, Daniel Singer, and Jess Winfield

2009

A Midsummer Night's Dream, Richard III, Scapin adapted by Bill Irwin and Mark O'Donnell

2010

The Tempest, The Merry Wives of Windsor, The Three Musketeers adapted by Robert Kauzlaric

2011

Romeo and Juliet, The Winter's Tale, The Complete Works of William Shakespeare (Abridged) by Adam Long, Daniel Singer, and Jess Winfield

2012

As You Like It, Othello, The Rivals by Richard Brinsley Sheridan

2013

Comedy of Errors, Macbeth, Failure: A Love Story by Philip Dawkins

2014

Much Ado About Nothing, Antony and Cleopatra, Elizabeth Rex by Timothy Findley

2015

Love's Labour's Lost, Richard II, Q Gents by GQ and JQ, *Love's Labour's Won* by Scott Kaiser

2016

Hamlet, Twelfth Night, Peter and the Starcatcher by Rick Elice

2017

A Midsummer Night's Dream, Shakespeare's Amazing Cymbeline by Chris Coleman, *I Heart Juliet* by GQ and JQ

2018

The Merry Wives of Windsor, Henry V, Shakespeare in Love by Lee Hall

2019

As You Like It, Pride and Prejudice, Caesar

2021

Measure for Measure, The Winter's Tale

2022

King Lear, Much Ado About Nothing, The Complete Works of William Shakespeare (Abridged) by Adam Long, Daniel Singer, and Jess Winfield

2023

The Comedy of Errors, The Tempest, The Book of Will by Lauren Gunderson

2024

Twelfth Night, Sense and Sensibility by Quetta Carpenter based on the Jane Austen novel, *Macbeth*

2025

A Midsummer Night's Dream, Hamlet, The Importance of Being Earnest by Oscar Wilde

Theatre for Young Audiences

Get, Set, Romeo and Juliet!

This 40-minute romp through one of Shakespeare's most beloved plays is for the young and young-at-heart. Mystery! Sword fights! Romance! And what about decisions? Are they set by the stars or can we stop and think...and even change our minds?

Illinois Shakespeare Festival's TYA show is perfect for the whole family.

Everyone is welcome, and admission is free!

All shows begin at 10 a.m. Ewing Cultural Center Grounds

Thursday June 25
 Saturday June 27
 Thursday July 2
 Thursday July 9
 Saturday July 11
 Thursday July 16
 Saturday July 18
 Thursday July 23
 Saturday July 25
 Thursday July 30
 Saturday August 1



Photo From 2025 Who's There!?

Get, Set, Romeo and Juliet!

By Nancy Steele Brokaw

Director Lori Adams***±
 Stage ManagerEmily Bensing±
 Assistant Stage Manager Charlie O'Connor
 Costume Designer Sky Graham
 Scenic Designer John C. Stark**±
 Choreographer.....Emily Grimany±

***Denotes Membership in United Scenic Artists ***Denotes Membership in Stage Directors and Choreographers Society
 ± Denotes Faculty, Staff, Student, or Alumni of Illinois State University*

Cast:

Tybalt/CapuletAndrew Faber±
 Storyteller/Nurse.....Rosemarie Erban±
 Juliet.....Sophia Joyce±
 Prince/Friar..... Everett "Eazy" Pervall
 Romeo Jeremiah King
 Mercutio/Bird, etc..... Chris Ramshaw

Wonsook Kim College of Fine Arts

Scott Irelan, Dean
 Polly Bedford, Director of Development
 Sara Semonis, Associate Dean for Research and Planning
 Janet Tulley, Assistant Dean for Enrollment and Student Services
 Tyler Lotz, Director, Wonsook Kim School of Art
 Adriana Ransom, Director, School of Music
 Ann Haugo, Director, School of Theatre, Dance, and Film

Colby Jennings, Director, School of Creative Technologies
 Kendra Paitz, Director and Chief Curator, University Galleries
 Nick Benson, Manager, Center for the Performing Arts
 Stephanie Kohl Ringle, Business Communications Associate
 Kurt LaShure, Budget Associate
 Eric Yeager, Director, CFA-IT

Illinois State University

Aondover Tarhule, President
 Ani Yazedjian, Vice President for Academic Affairs and Provost
 Glen Nelson, Vice President for Finance and Planning
 Levester Johnson, Vice President for Student Affairs
 Pat Vickerman, Vice President for University Advancement



Enjoyed your evening?

Want to become a financial supporter?

Scan the QR code or visit IllinoisShakes.com/Giving

The Board of Directors Illinois Shakespeare Festival Society

**"My bounty is as boundless as the sea,
My love as deep; the more I give to thee,
The more I have, for both are infinite."**

William Shakespeare - *Romeo and Juliet*

John Danenberger, President

Erich Brandt, Vice President

Jane Schurter, Secretary

Anita Carney, Lyndsey Carney, Ann Durand, Jill Freeman,
Cheryl Magnuson, Jay-James Miller, Ashley Montgomery,
David Prete, Erik Rankin, Jerry Ringer, Sue Silvey,
Nancy Stevens, Toni Tucker, and Emily Grimany, Student Liaison

Emeritus Board Members

Larry Eggan

Paul Harmon

Ann Haugo, Producer

Robert Quinlan, Artistic Director

Scott Irelan, Dean, Wonsook Kim College of Fine Arts

Lyndsey Carney, Director, Ewing Cultural Center



giving.illinoisstate.edu/fund/illinois-shakespeare-society-fund/

This document is available in alternative formats upon request by contacting Illinois Shakespeare Festival at (309) 438-8785.