

The #1 must-see cultural attraction in Illinois.

Chicago Tribune, April 2018



ILLINOIS SHAKESPEARE FESTIVAL

The 2018 Season June 30–August 11

The Professional Theatre at Illinois State University

You are invited to our 2018 season of love, glory, and hilarious hijinks!

In some ways, this season has been 25 years in the making. My first set design for the festival was in 1993. Some 32 sets later, over the course of 18 seasons—I feel privileged to be the new artistic director for the theatre that I love. I am grateful for the opportunity to serve the festival in this new and exciting way.

My goal is to make each production of the highest professional quality. The directors I have chosen are exceptionally qualified to help me deliver on this promise. Our company of actors brings an enormous amount of talent and experience to the Ewing stage. Returning principals include Jordan Coughtry in the title role of *Henry V* and Steven Young as Falstaff in *The Merry Wives of Windsor*. New arrivals include Anthony Martinez as Will Shakespeare and Katherine Fried as his muse in *Shakespeare in Love*.

By design, these plays offer you and yours a marvelous array of stories to spirit you away. It's what live theatre does best.

You will be pleased to find season tickets have been value-priced, so please join us for all three plays.

The theatre is located on the grounds of Ewing Cultural Center, which is the most beautiful setting for Shakespeare anywhere! The theatre seats 428, making it comfortably intimate.

Come early and stroll through the gardens, arrange a backstage or Ewing Manor tour, take in a “green show,” and enjoy a tasty Dinner Bell meal with a glass of wine. It's all here for you.



*John C. Stark, artistic director
Illinois Shakespeare Festival*



THE MERRY WIVES OF ~~WINDSOR~~



The Merry Wives of Windsor

By William Shakespeare

The disreputable but lovable Sir John Falstaff is in rare form in Shakespeare's most farcical play. Back from the battlefields, Falstaff romantically pursues two wealthy wives to feed his considerable appetite for all things. Their sharp wit and charming manipulation are a hilarious mismatch for the braggart soldier.

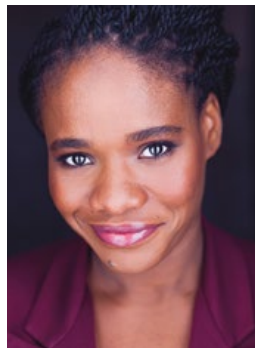


Steven Young plays Falstaff

Directed by Deanna Jent
Sponsored by Sue Silvey

Dates:

July 5–7, 17, 18, 25, 28, 31
August 3, 4, 9



Dee Dee Batteast plays Mistress Ford

SAVE 33% off the single ticket prices with season tickets!

HENRY

V



Henry V

By William Shakespeare

Young Hal, of Shakespeare's *Henry IV, Parts 1 and 2*, now sits upon the long-sought throne of England. As King Henry, his sights are set on grander goals across the channel. The ambitious monarch goes "once more unto the breach" to conquer France by winning the Battle of Agincourt, and gain the heart of its princess.

Directed by Karen Kessler

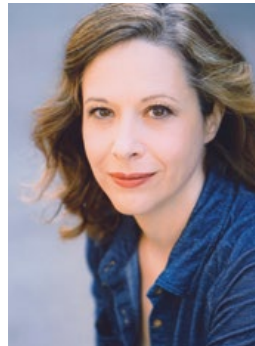
Dates:

July 12–14, 24, 27

August 2, 10



Jordan Coughtry plays Henry V



Quetta Carpenter plays Exeter

You'll see it FREE with season tickets!

SHAKESPEARE — IN — LOVE



WGLT.org
CLT 89.1
FM

Shakespeare in Love

By Tom Stoppard and Marc Norman;
adapted by Lee Hall

The Oscar-winning film comes to life on the stage! Passion and poetry abound in bawdy and boisterous Elizabethan England, where young Will Shakespeare meets his muse for the world's greatest romance, *Romeo and Juliet*. The real-life Will is irresistibly romantic in this wildly hilarious plot.

—*Staged inside the cool and comfortable Center for the Performing Arts Theatre at Illinois State University*

Directed by Marti Lyons

Sponsored by WGLT

Dates:

July 19–22, 25, 26, 29

August 1, 7, 11



Anthony Martinez plays Will



Katherine Fried plays Viola

You will love our new season ticket prices!

Shakespeare in the Land of Lincoln

Did you know that Abraham Lincoln has many connections to the Bard? Scholars have studied how our nation's 16th president drew upon Shakespeare's writings. This summer, the Illinois Shakespeare Festival reveals the fascinating ties in a series of free events.

Lectures held at Ewing Manor

- July 14 2 p.m.—**James M. Cornelius, Ph.D.**
Curator of the Lincoln Collection; Abraham Lincoln Presidential Library and Museum
- July 21 4 p.m.—**Spotlight Speaker Michael Anderegg**
author of *Lincoln and Shakespeare* (2015)*
- July 28 2 p.m.—**Guy Fraker**
Lincoln scholar, author
- August 4 2 p.m.—**Robert Bray, Ph.D.**
Illinois Wesleyan University professor, author

Reservations recommended. Sign up on our website under Education, Shakespeare in the Land of Lincoln tab.

*Available this summer at the festival gift shop at Ewing, or through our new online store at IllinoisShakes.com.

Lincoln's Festival on Route 66

Lincoln's Festival on Route 66 offers a wonderful weekend of events July 20–22. Visit LincolnsFestival.net for details.

Shakesperience

View the special collections on Shakespeare and Lincoln presented from 1–3 p.m. on July 22 at the Illinois State University Milner Library. Details available beginning June 1 at Library.IllinoisState.edu. Also free!

Theatre for Young Audiences (TYA)

Meet Shakespeare and Lincoln in ***Double, Double***, a new play by Nancy Steele Brokaw, commissioned by Illinois Shakespeare Festival. Two of history's biggest superstars are together in this fun, fast-paced, 40-minute show. Learn how Shakespeare inspired Lincoln as he wrestled with a decision that would change his life and history forever. FREE for all. 10 a.m. Thursdays and Saturdays at Ewing Manor; July 21 at Franklin Park in Bloomington).

Illinois State University Alumni and Friends Night

Alumni and friends are invited to the annual ISU evening at the festival on Saturday, July 21. The event will include a social hour, dinner and a short program, followed by a performance of *Shakespeare in Love*. For more information or to purchase tickets visit Alumni.IllinoisState.edu or call (309) 438-2586.

Groups Welcome

As the only professional Shakespeare festival located in the "Lincoln Corridor," more and more of our patrons are visiting Illinois Shakespeare Festival from across the country. Groups enjoy a 20% discount on tickets. Explore group benefits at IllinoisShakes.com under Buy Tickets/Groups tab.



ILLINOIS STATE UNIVERSITY
College of Fine Arts



 VisitBN

BLOOMINGTON-NORMAL AREA
CONVENTION & VISITORS BUREAU

MooNiE the Magnif'Cent Returns

Born at the festival in 1992, Philip Earl Johnson's one-man circus of juggling, rope walking, and audience participation has delighted audiences across the country for the last 25 years. Johnson '86 is called "...Cirque Du Soleil good" by the *LA Times* and a "...terrific act" by the *Chicago Tribune*.

TWO PERFORMANCES ONLY

Family Matinee

2 p.m., Saturday June 30, CPA Theatre
General Seating, \$15
Classic MooNiE performs his irresistibly hilarious show for all ages!

To Flop or Not to Flop—world premiere

8 p.m., Saturday June 30, CPA Theatre
General Seating, \$18
MooNiE's hilarious and evocative true stories are juxtaposed with Shakespeare's fools. A triumphant celebration of our moments of fiasco, failure, and flop!



The Improvised Shakespeare Company

Based on one audience suggestion—a title for a play that has yet to be written—The Improvised Shakespeare Company creates a fully-improvised Shakespearean masterpiece right before your eyes.

THREE PERFORMANCES ONLY

Wednesdays at 8 p.m. July 18, 25, and August 8
New venue! CPA Theatre—\$18 General Seating

2018 Festival calendar—make the most of your summer!

Tuesday	Wednesday	Thursday	Friday	Saturday	Sunday
		JULY 5 <i>Wives</i> 7:30 p.m. P	6 <i>Wives</i> 8 p.m. 0	7 <i>Wives</i> 8 p.m. TYA†	
		12 <i>Henry</i> 7:30 p.m. P, TYA†	13 <i>Henry</i> 8 p.m. 0	14 <i>Henry</i> 8 p.m. LS, TYA†	
17 <i>Wives</i> 7:30 p.m.	18 <i>Wives</i> 7:30 p.m.	19 <i>Love</i> 7:30 p.m. P, TYA†	20 <i>Love</i> 8 p.m. LF, 0	21 <i>Love</i> 8 p.m. LF, LS, TYA-FP+ ALUMNI NIGHT	22 <i>Love</i> 3 p.m. LF
24 <i>Henry</i> 7:30 p.m.	25 <i>Love</i> 2 p.m. <i>Wives</i> 7:30 p.m.	26 <i>Love</i> * 7:30 p.m. TYA†	27 <i>Henry</i> 8 p.m.	28 <i>Wives</i> 8 p.m. LS, TYA†	29 <i>Love</i> 2 p.m.
31 <i>Wives</i> 7:30 p.m.	AUGUST 1 <i>Love</i> 7:30 p.m.	2 <i>Henry</i> * 7:30 p.m. TYA†	3 <i>Wives</i> 8 p.m.	4 <i>Wives</i> 8:00 p.m. LS, TYA†	5 TBD
7 <i>Love</i> 7:30 p.m.	8 TBD	9 <i>Wives</i> * 7:30 p.m. TYA†	10 <i>Henry</i> 8 p.m.	11 <i>Love</i> 2 p.m. CLOSING CABARET	

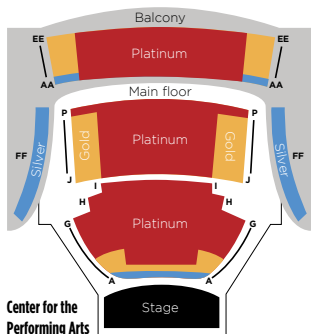
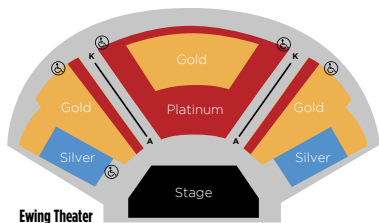
* Post performance talk-back and ice cream social ✂ Dinner Bell food truck
P-Preview 0-Opening Night LS-Lincoln & Shakespeare lecture LF-Lincoln's Festival
TBD-Play to be determined

† TYA-Theatre for Young Audiences: 10 a.m. † TYA-FP-Theatre for Young Audiences-Franklin Park: 10 a.m.

Season ticket benefits

- SAVE 33% off single-play prices. It's like seeing one play FREE
- FREE and flexible exchanges
- FREE rain-out insurance and rebooking
- Pay as little as \$40 for all three plays!
- Opportunities for extra tickets at same 33% savings
- Priority seating for the next season

TICKET PRICING	SILVER	GOLD	PLATINUM
Single ticket	\$20	\$35	\$54
Season ticket	\$40	\$70	\$109
You save	33%	33%	33%



This document is available in alternative formats upon request by contacting the Illinois Shakespeare Festival at (309) 438-2586. An equal opportunity/affirmative action university encouraging diversity

Order online today for best seats at IllinoisShakes.com

It's easy to order tickets!

Online at IllinoisShakes.com, or call **(309) 438-2535**.

Mail to: Illinois Shakespeare Festival, Campus Box 5700, Normal, IL 61790

Yes, I want season tickets!

SEATING SECTION	PRICE EACH	QTY.	TOTAL
	\$		\$

A \$50 donation grants you membership in the Illinois Shakespeare Festival Society

Your \$100 gift entitles you to VIP parking and more (*separate payment is required*)

\$

CHOOSE: **Merry Wives of Windsor** **Henry V** **Shakespeare in Love**

Dates

Special seating needs:

NAME

ADDRESS

CITY

STATE

ZIP

EMAIL

PHONE

PAYMENT

- CHECK ENCLOSED (payable to Illinois Shakespeare Festival).
- DONATION CHECK FOR \$_____ IS ENCLOSED (payable to Illinois Shakespeare Festival Society).
- PLEASE CHARGE MY (CIRCLE ONE) MASTERCARD VISA AMEX DISCOVER
- CHARGE A SECOND TIME FOR MY DONATION TO ISF.

CARD NUMBER

CVC CODE

EXP DATE

SIGNATURE (AS ON CARD)